

# URBAN AGE CITY TRANSFORMATIONS CONFERENCE

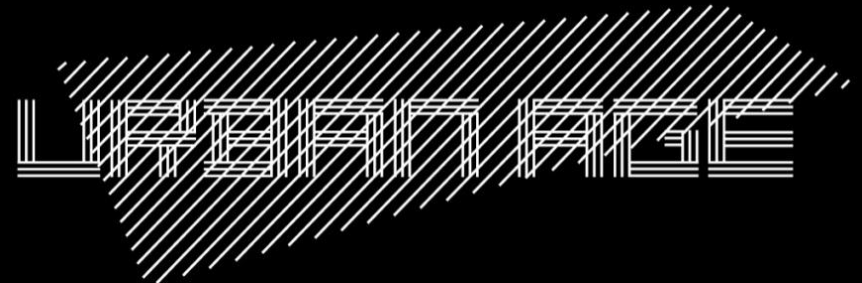
October 2013

**José Castillo**

Arquitectura 911 SC; Harvard University

*Mexico City: containing the  
endless city*

All rights are reserved by the presenter  
[www.lsecities.net](http://www.lsecities.net)



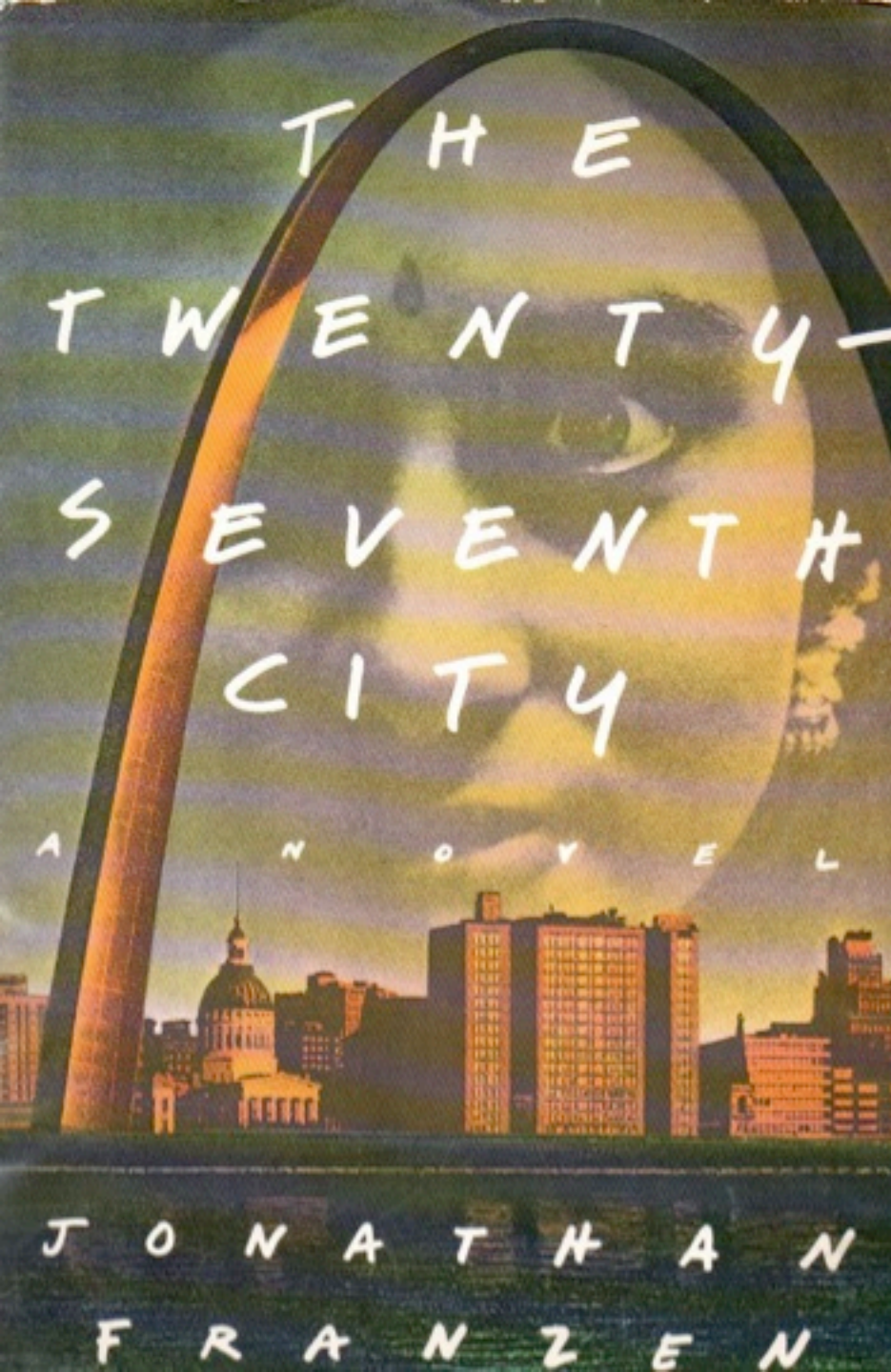
# Urban Age, City Transformations

## Mexico City: Fragments of Bigness

Rio de Janeiro, October 24th



Jose Castillo  
arquitectura 911sc



“Cities are ideas, ultimately. They create themselves, and the rest of the world apprehends them or ignores them as it chooses”



**77.8%**

of the population lives in an urban area

**11**

cities with over 1,000,000 inhabitants

**53%**

population in metropolitan areas

**59**

metropolitan zones

**7**

MA + than 1.5M inhabitants

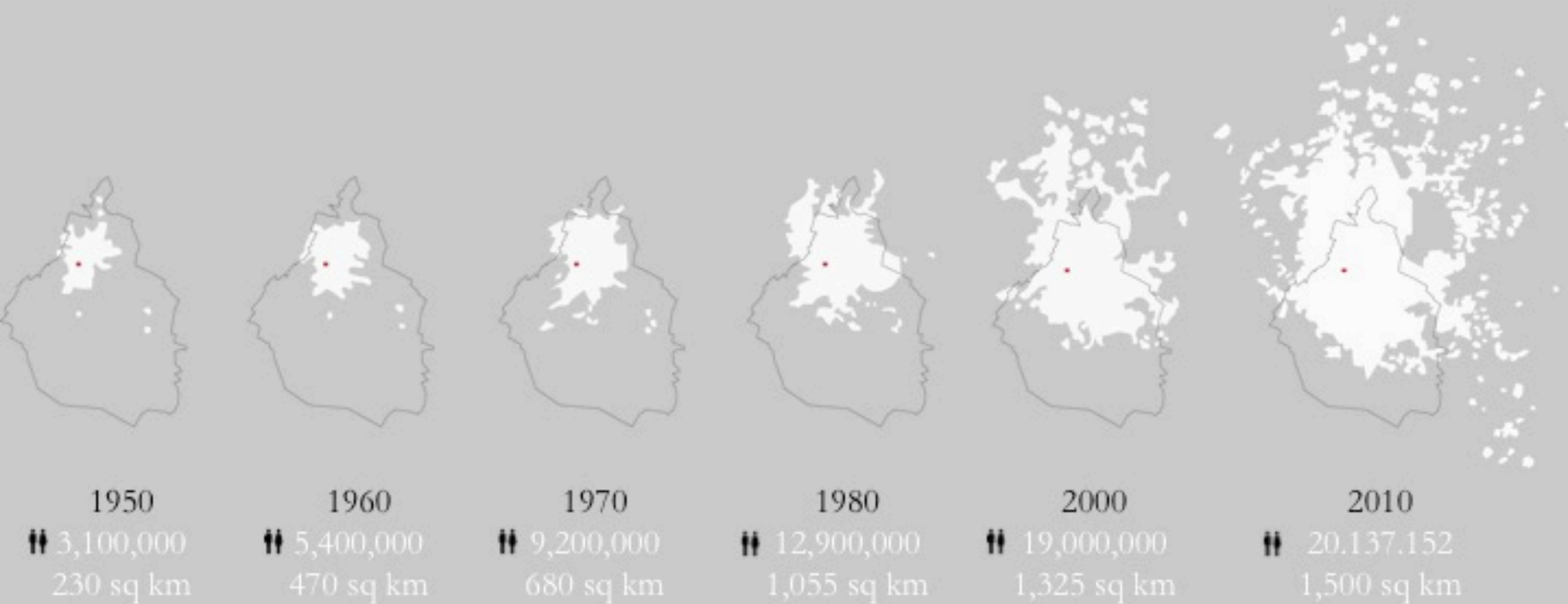
**20%**

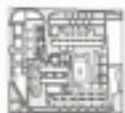
population in MAVM



Mexico City, Juan O'Gorman

## Population growth in ZMVM





Brasilia's Superquadra



Urban Complex Presidente Alemán



Housing Complex Unidad Independencia



Multifamiliar Presidente Juárez



Housing Complex Santa Fe



Urban Complex Nonoalco Tlatelolco



Heroic Military Academy



Central de Abasto



Las Américas Housing Development



Gardens of El Pedregal Development



Satellite City



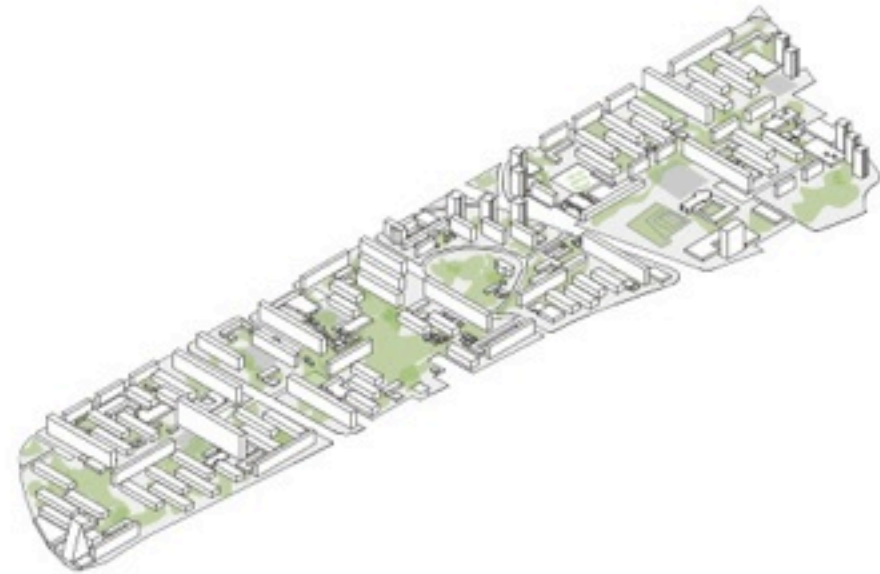
University City



Project  
Urban Complex Nonoalco-Tlatelolco

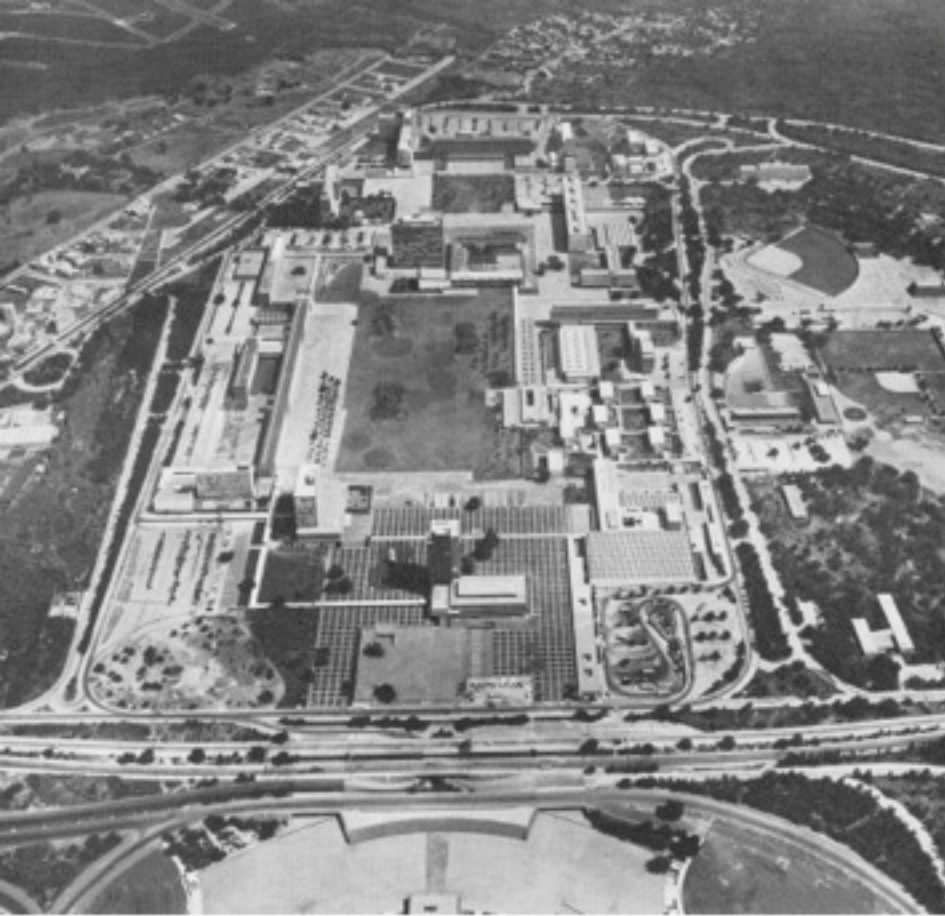
Architect  
Mario Pani

Date  
1966-68



Plot area - 96 hectares  
Footprint - 36 hectares  
Units - 11,906





Project  
University City

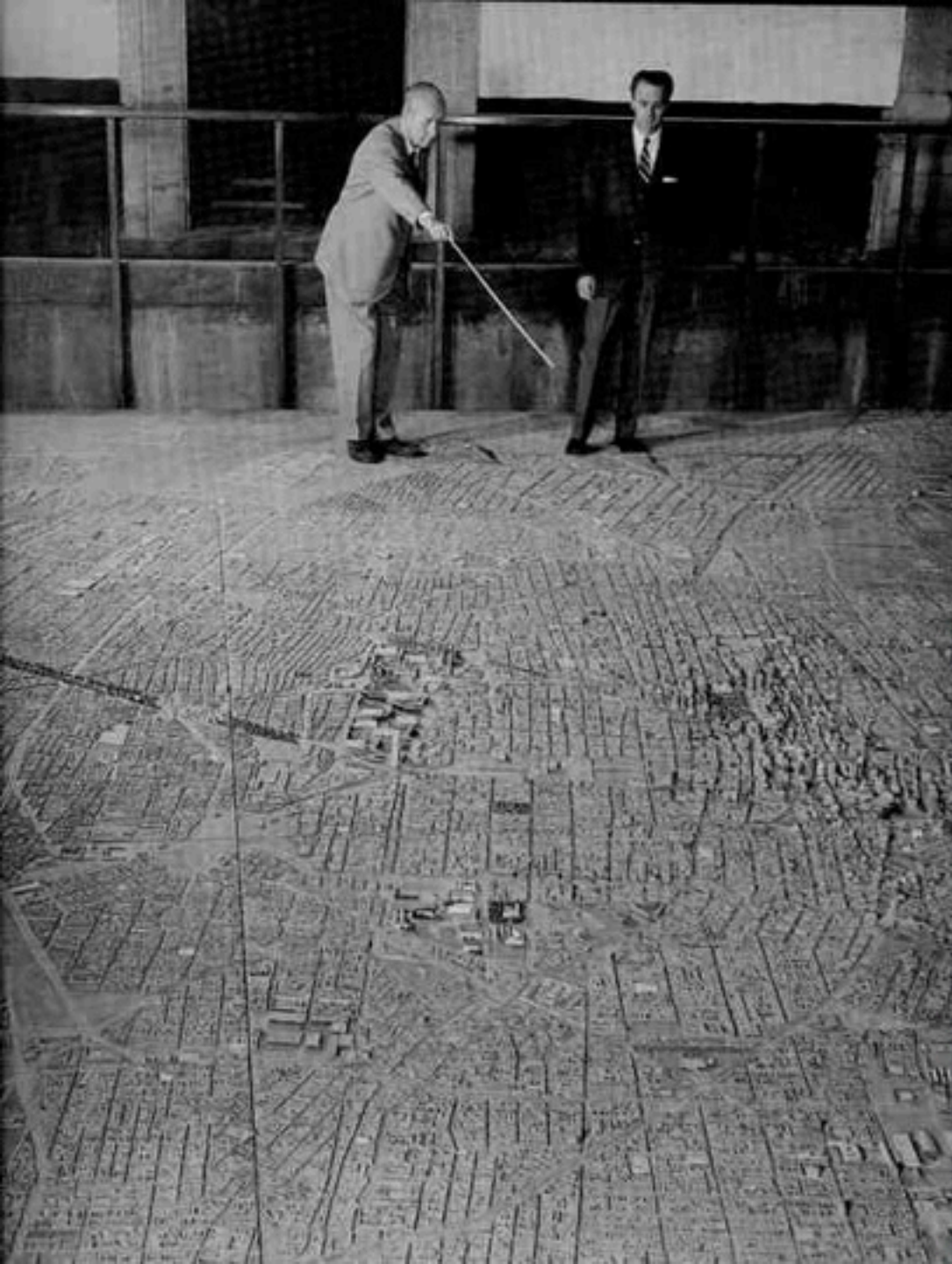
Architect  
Mario Pani and Enrique del Moral

Date  
1952



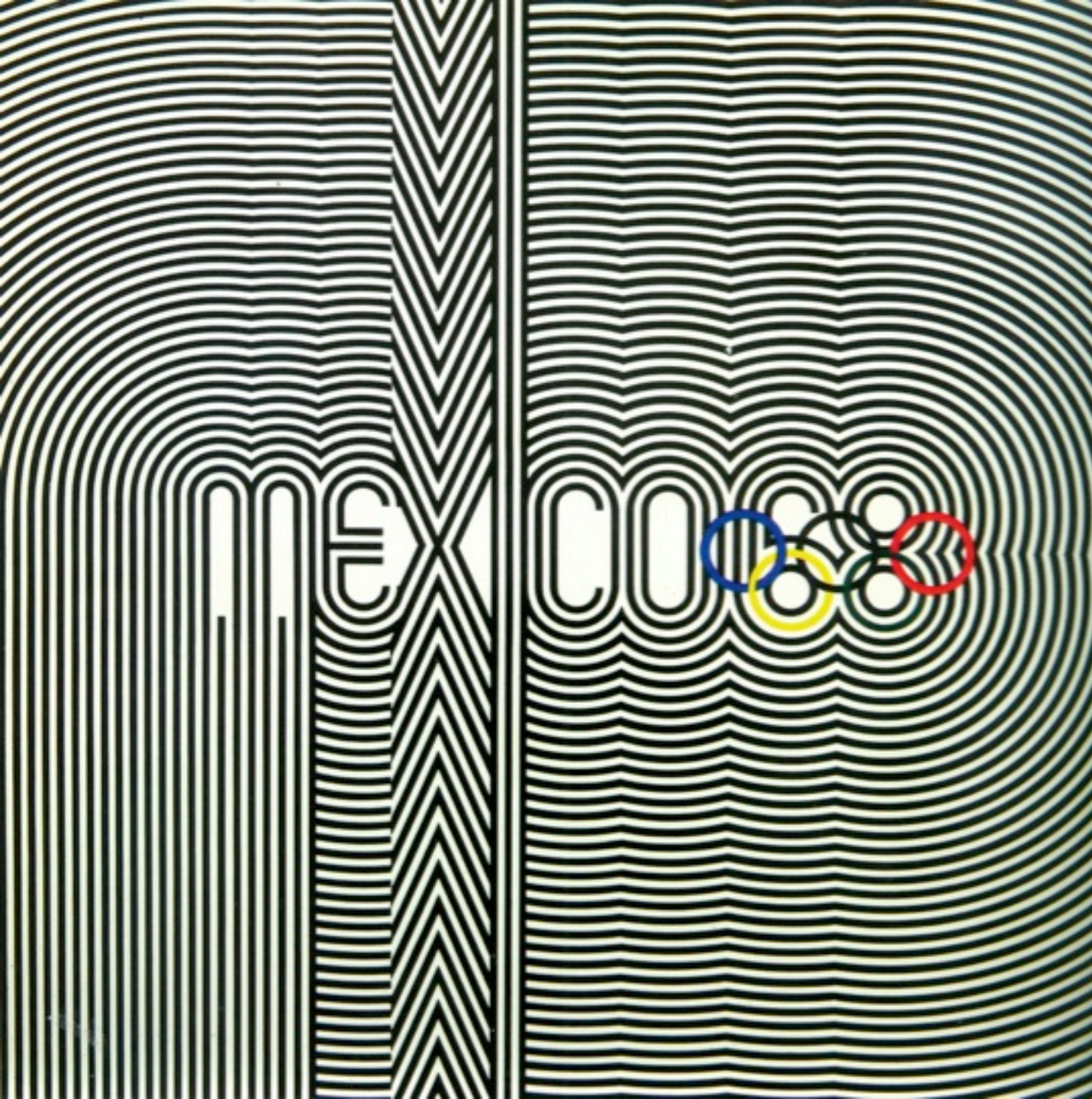
Plot area - 719 hectares  
Footprint - 51 hectares

Optimism















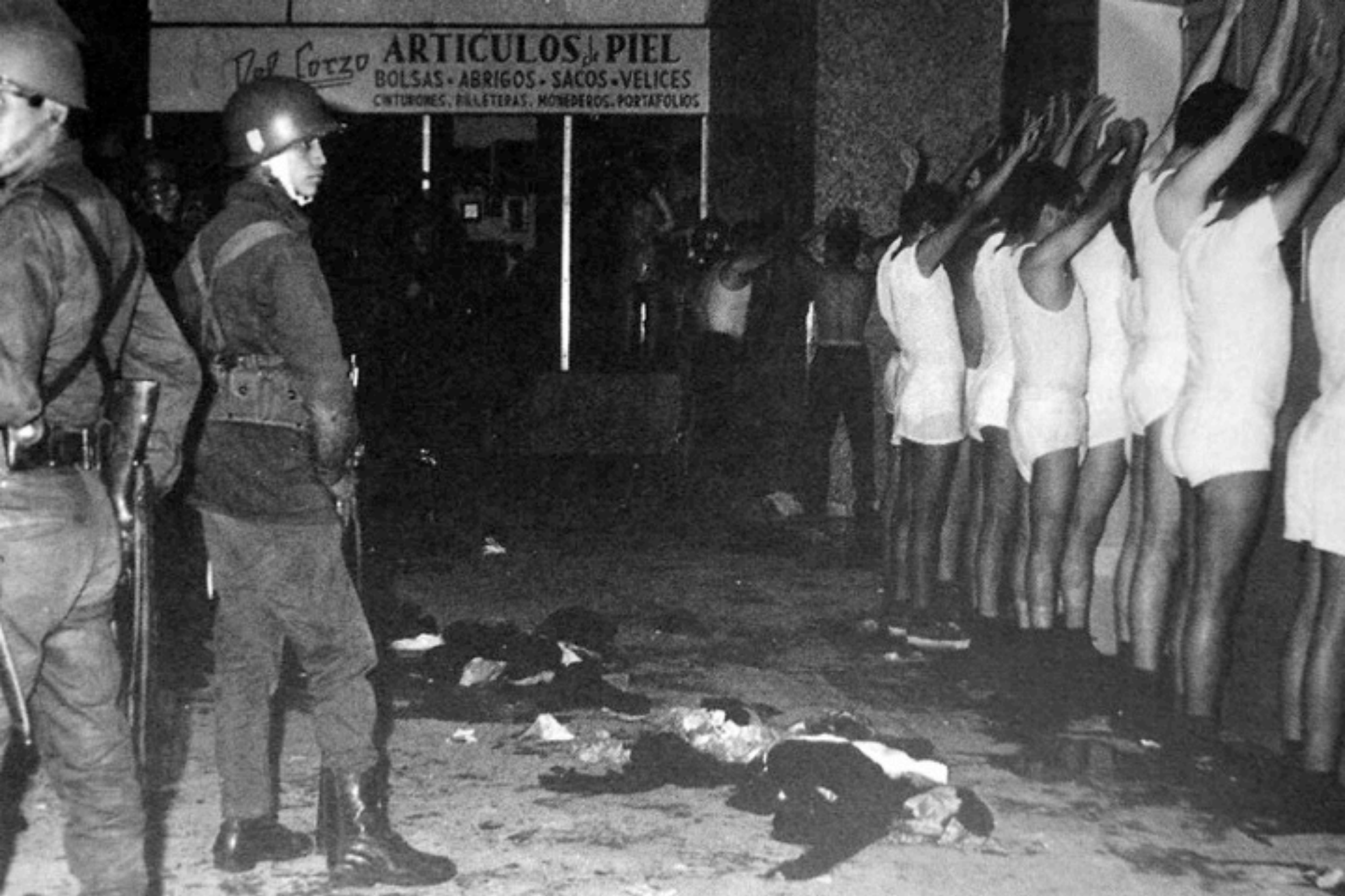


















# INFERNAL EXPLOSION DE GAS!

DESPUES  
INCENDIO  
FATIDICO!

40 PESOS EN  
EL PAIS

POSTER DE  
EMMANUEL

MUERTE,  
DOLOR Y  
PANICO!

NUMERO 1127  
11401

**ALARMA!**

U.S. \$0.80 DOLL.

**COMO EL FIN DEL MUNDO!**



# TERREMOTO!

**PANICO,  
HORROR,  
MUERTE!**

Octubre 2, 1985.

No. 1178

**ALARMA.**  
únicamente la VERDAD

SALES IN THE U.S. MAY CONSTITUTE A  
VIOLATION OF U.S. COPYRIGHT LAWS

**LAGRIMAS, LUTO!**

**LA CAPITAL, DESTROZADA!**

50  
PESOS EN  
EL PAIS  
IN U.S.  
\$0.80



**SOLO RUINAS QUEDARON!**



PANORAMA DESOLADOR DESPUES DEL MACROSISMO

# ZONA DE DESASTRE



BUSCABAN A LAS VICTIMAS



LOS SORPRENDIO LA MUERTE







¿Hace cuánto no la dejas  
salir a jugar?



EL CASTAÑO  
RESIDENCIAL

*Metepéc*

A 20 minutos

[www.tembo.com.mx](http://www.tembo.com.mx)









Handwritten graffiti on a metal beam: "ARTISTAS Y FOTOGRAFOS"





Ciudad Juarez (2009)	130 /100,000
Nueva Orleans (2008)	64 /100,000
Detroit (2009)	40/100,000
ZMVM (2010)	16/100,000

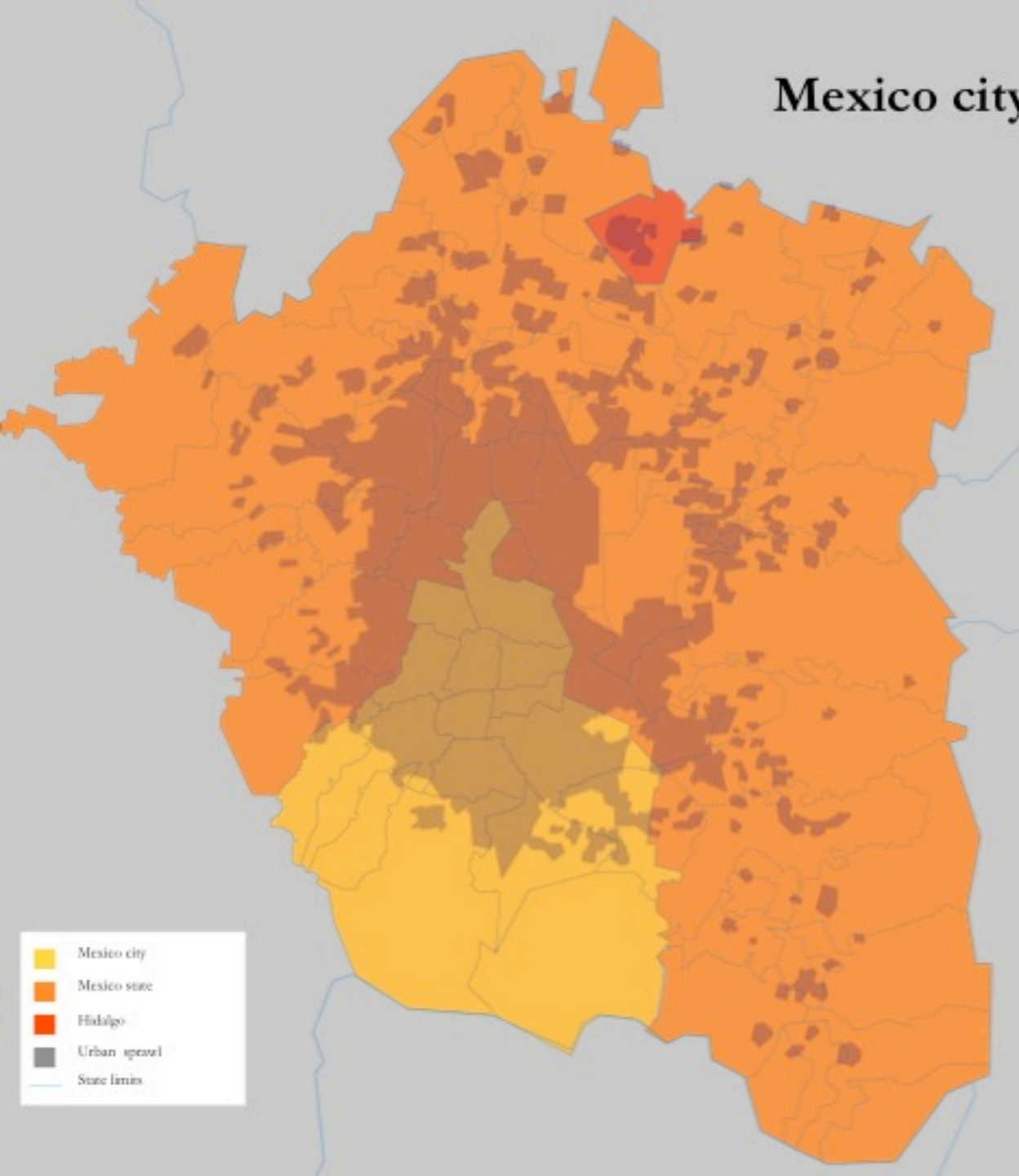
## Homicide Rates

## Intentional homicide rate



\*Homicides per year

# Mexico city and metropolitan area



Area: 1,500 sq km. / 7,854 sq km.

0.08% of the total territory of Mexico

Population: 20,137, 152

16 delegations

58 municipalities in Mexico

2 municipalities of Hidalgo

- Mexico city
- Mexico state
- Hidalgo
- Urban sprawl
- State limits

**Mobility**



# Transportation

## Subway

4,407,850 daily passengers  
226,488km network in service

## Bus

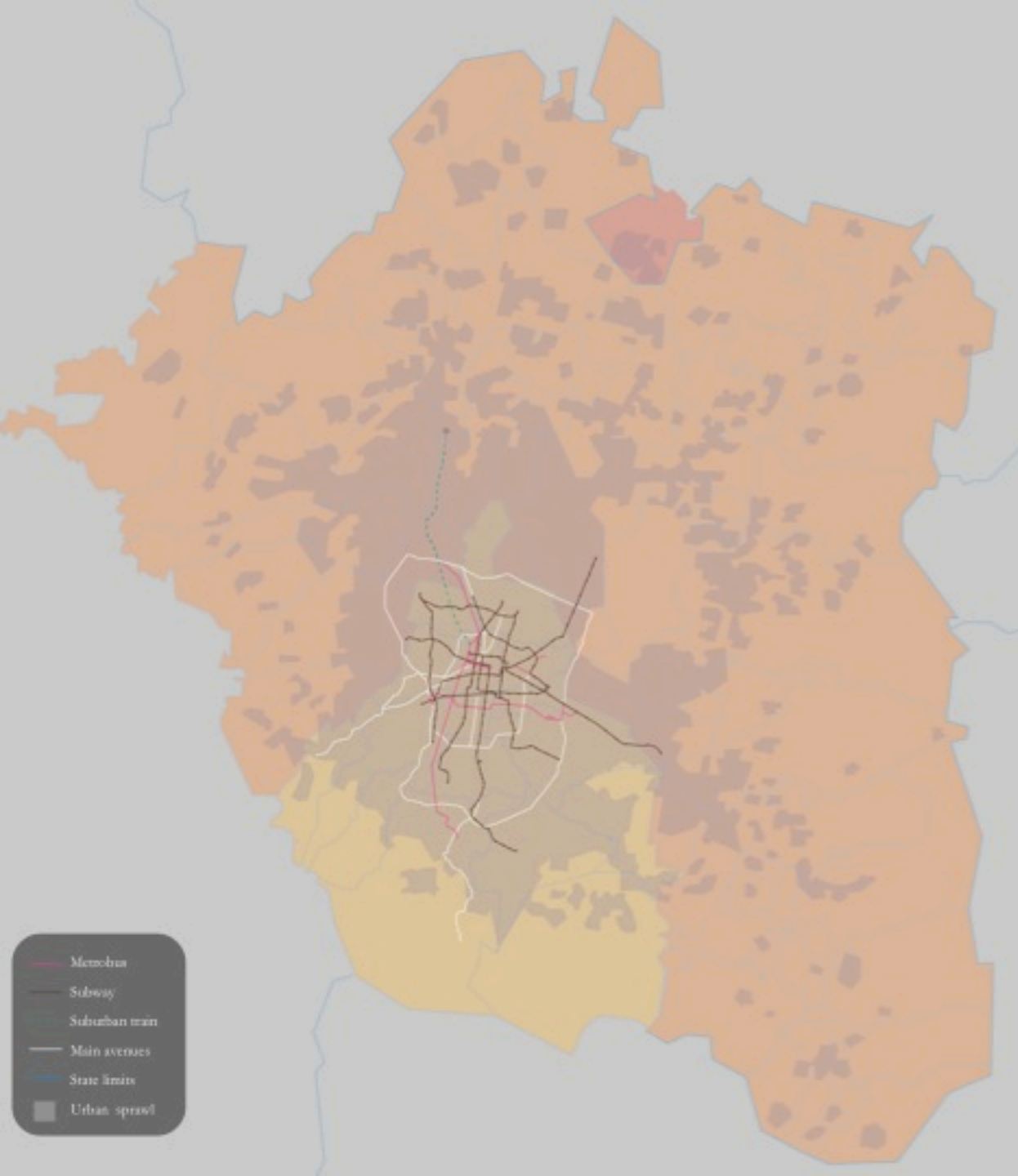
750,000 daily passengers  
3,500 km in service

## BRT

- Metrobus  
840,000 daily passengers  
95 km in service  
- Mexibus  
505,000 daily passengers  
31 km in service

## Private cars

5,375,474 registered units



- Metrobus
- Subway
- Suburban train
- Main avenues
- State limits
- Urban sprawl







 Pulmon



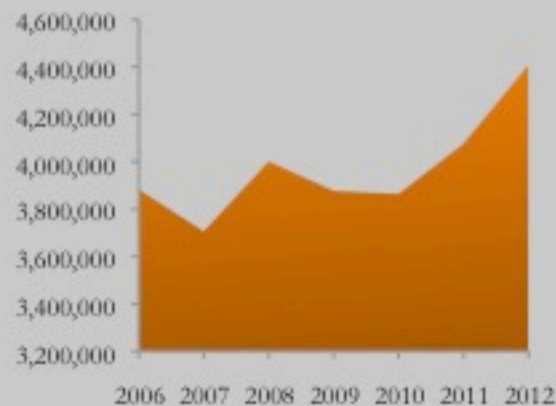
258

la vie

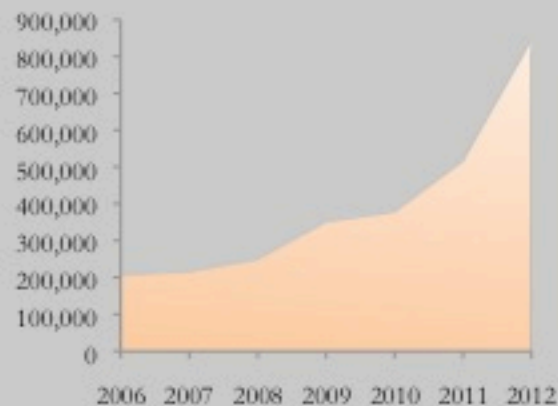
# Transportation



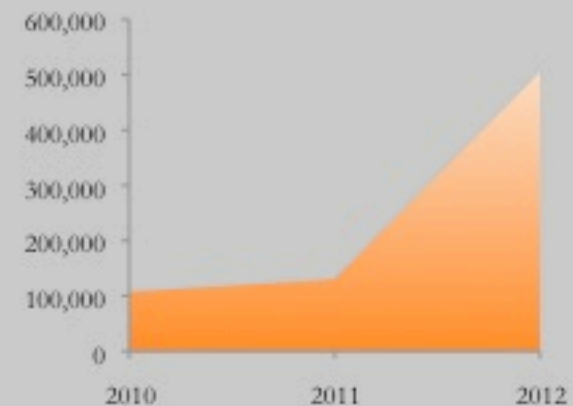
## Subway



## Metrobus



## Mexibus



\*Passengers daily average







Super via

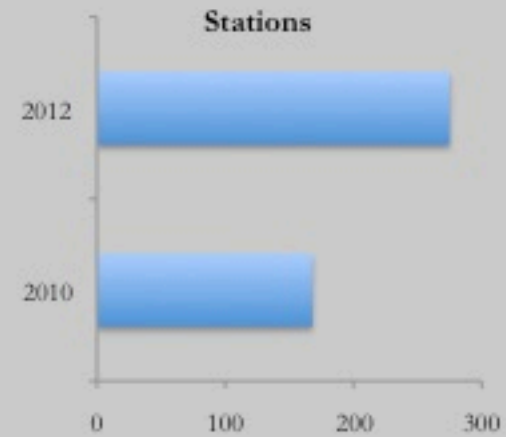
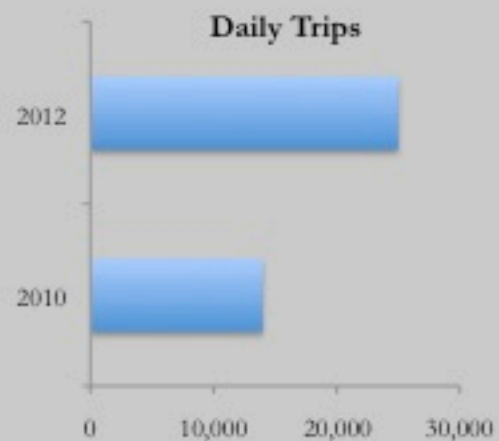
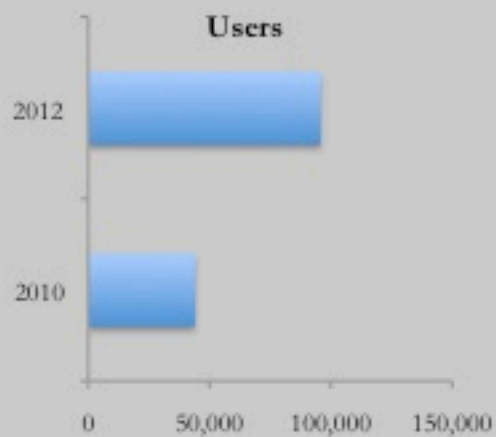
10 km long

# Transportation



275	stations
95,780	beneficiaries
25,000	daily trips

# Transportation

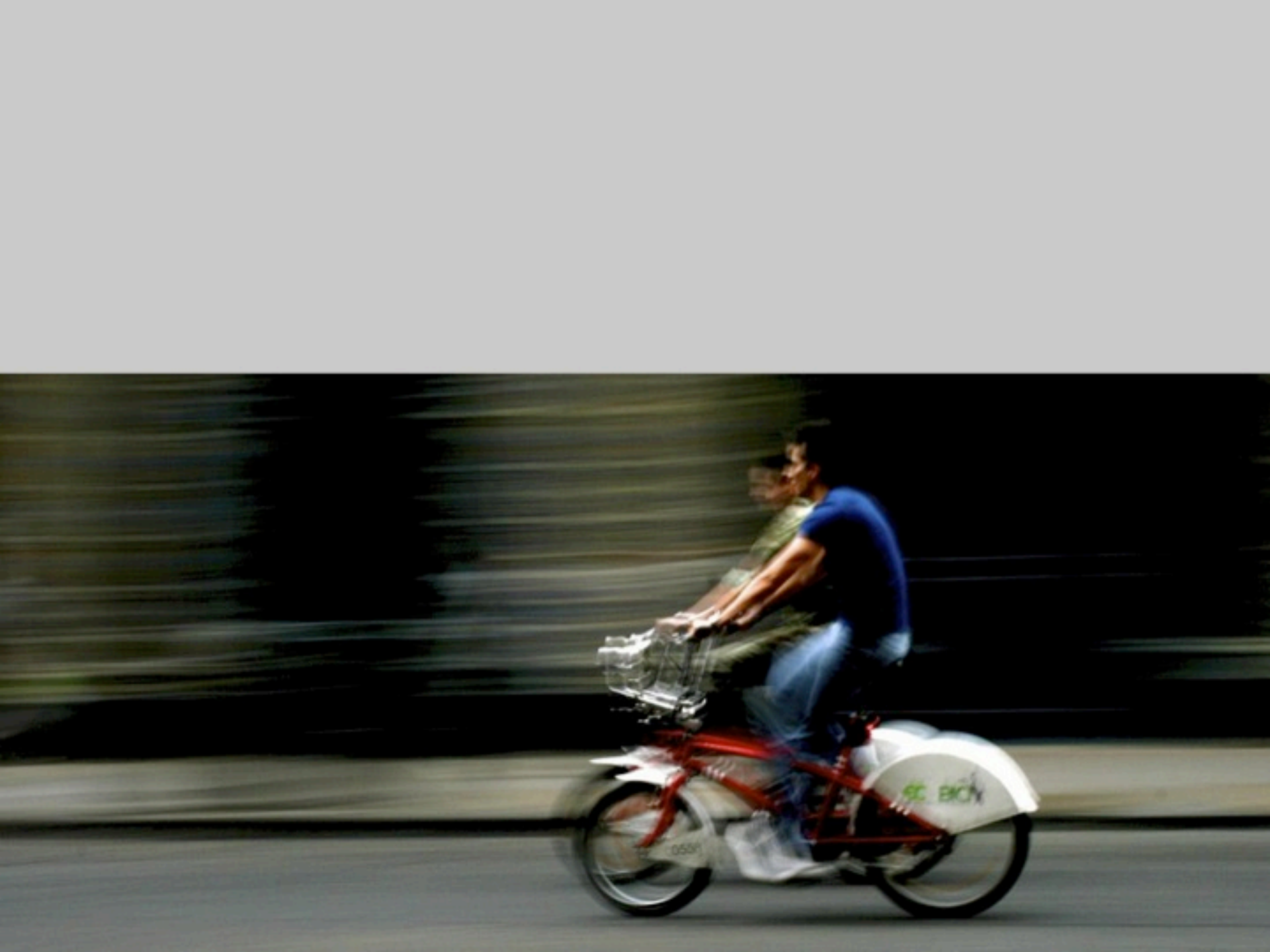












Madero St.



3,280 ft long  
200,000 users on weekends













# Institutional Challenges

# Urban developments instruments

## *Federal Government*



## *State Government*

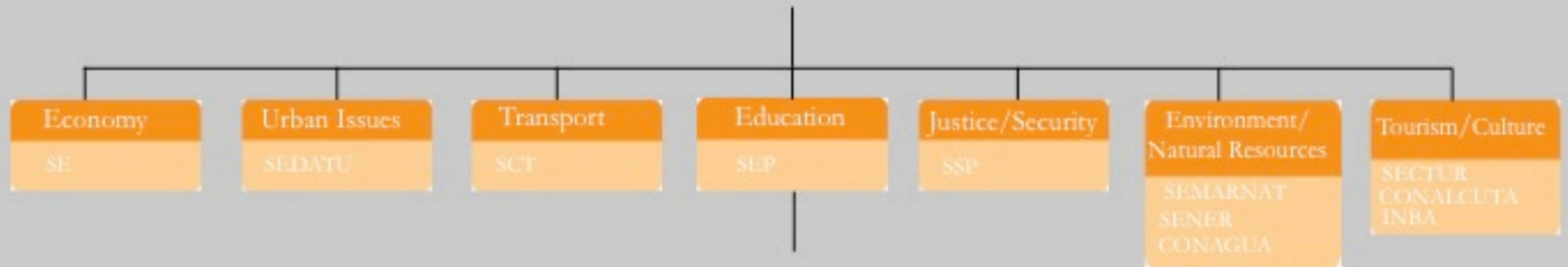


## *Municipal Government*

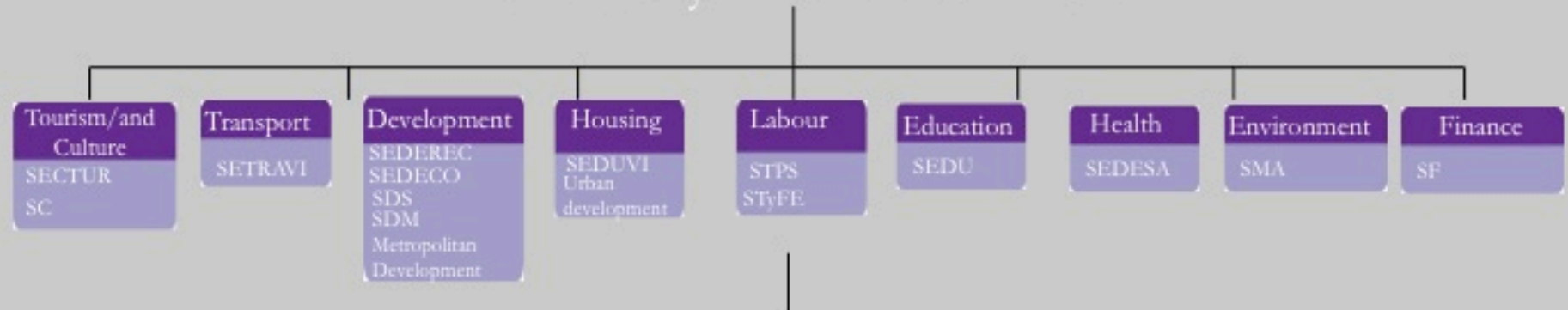


# Governing structure

## Mexican Federal Government



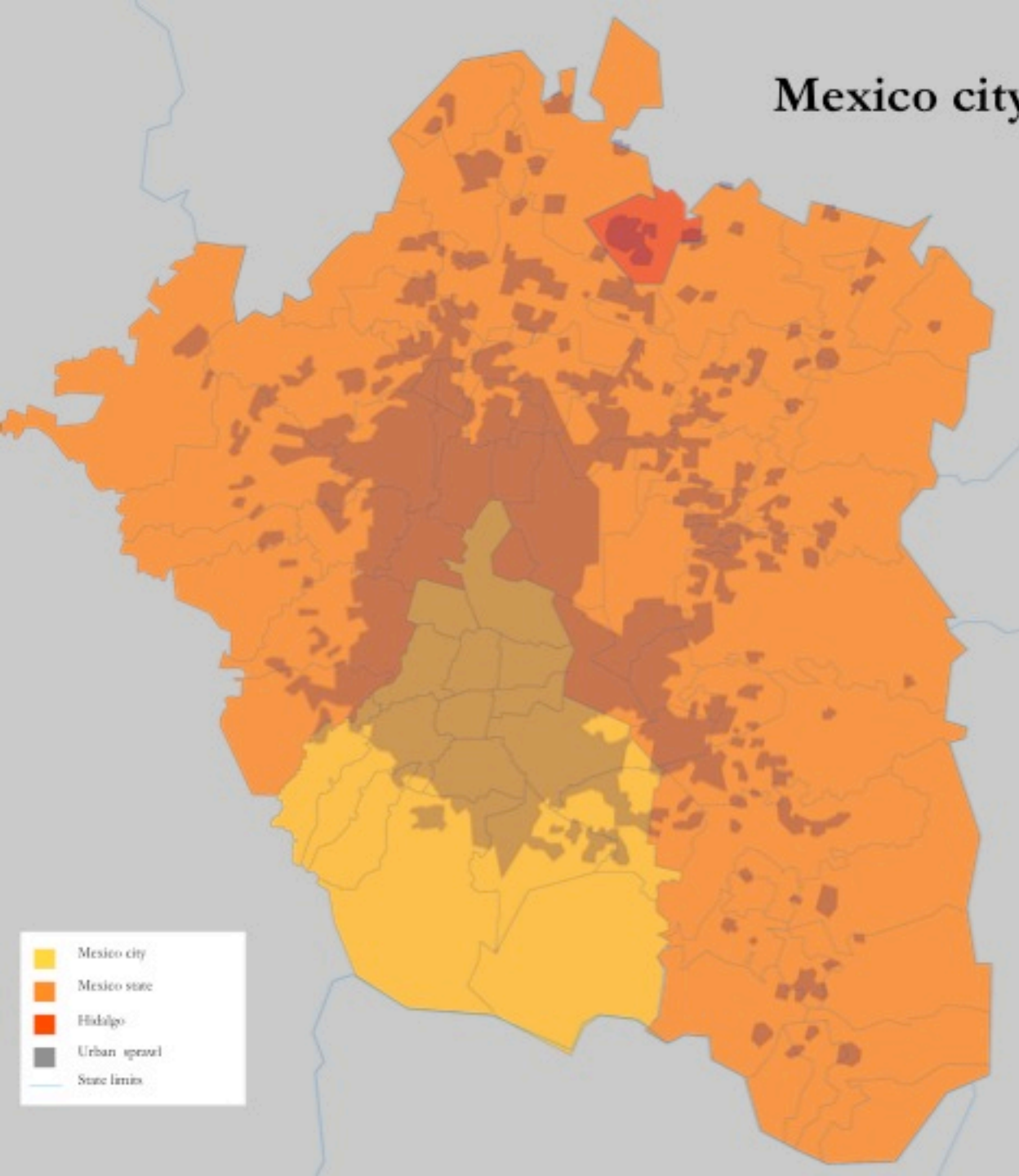
## Mexico City Local Government



## Delegación (Boroughs)



# Mexico city and metropolitan area



Area: 7,854 sq km.

0.08% of the total territory of Mexico

Population: 20,137, 152

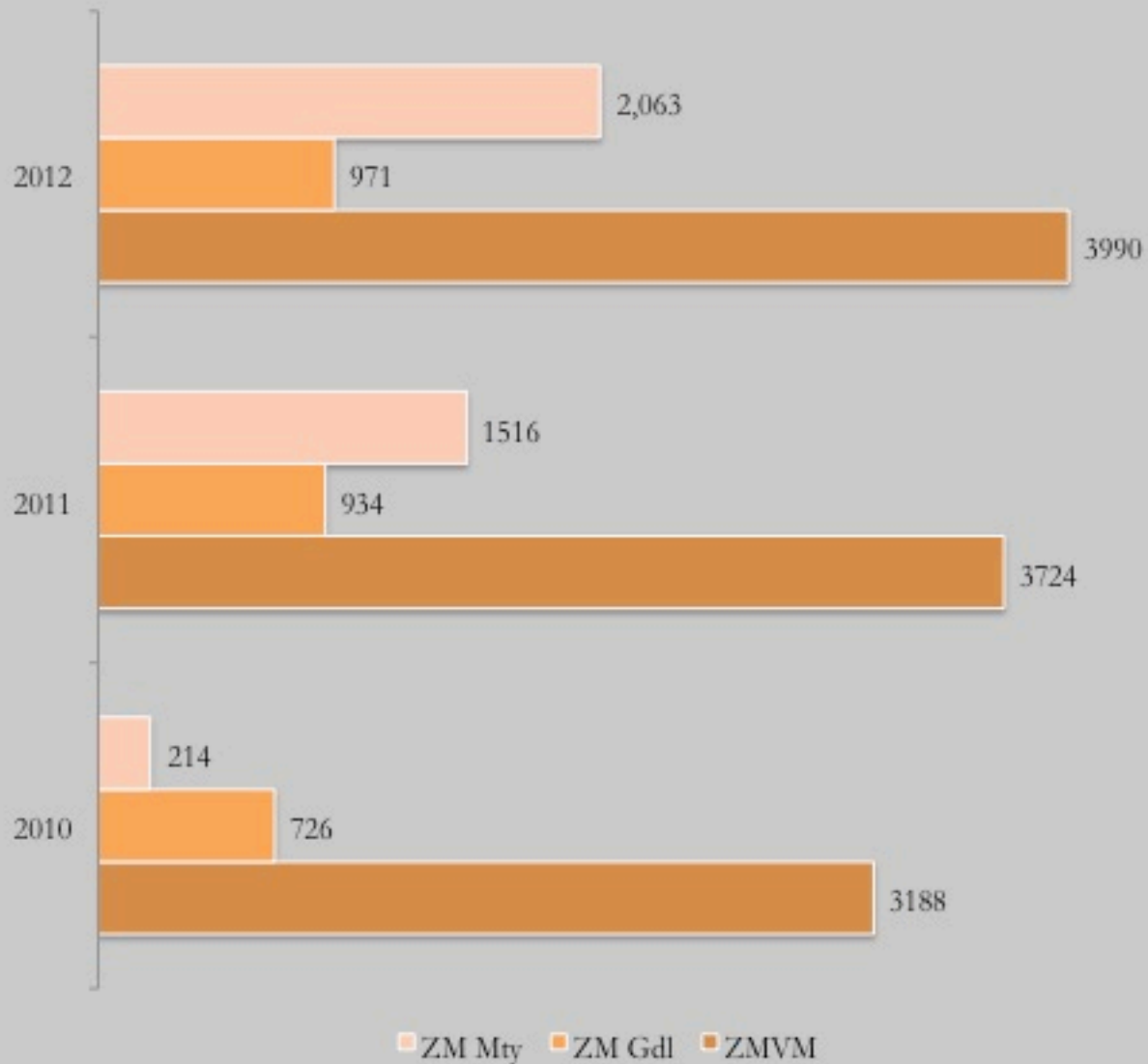
16 delegations

58 municipalities in Mexico

2 municipalities of Hidalgo



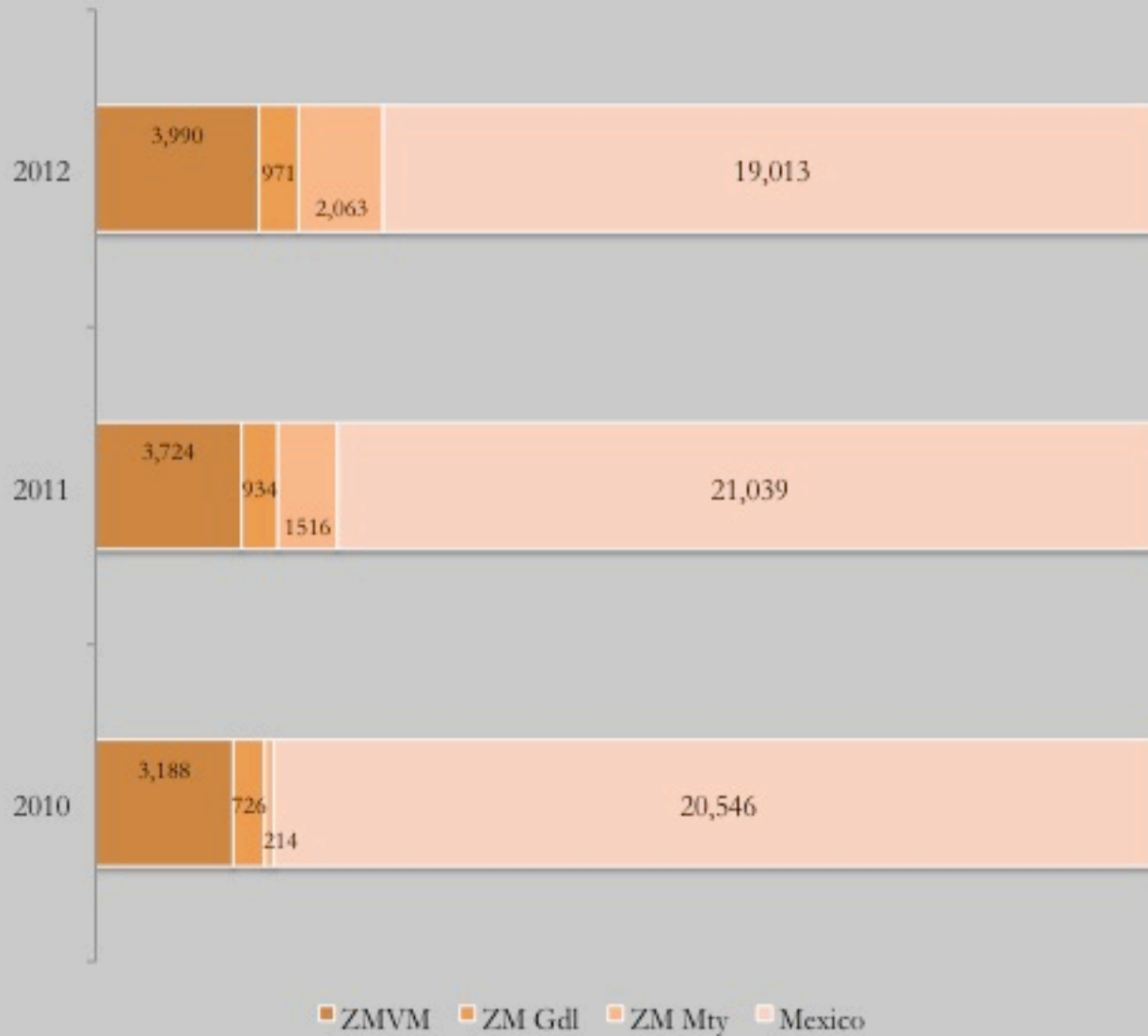
# Intentional homicide rate



\*Homicides per year



# Intentional homicide rate



\*Homicides per year







Zona Rosa



Zona Rosa







Centro de Transferecia Modal  
**EL ROSARIO**  
ENCUENTRA TU PASADAJE  
EL CENTRO PARA TI

Centro de Transferecia Modal  
**EL ROSARIO**  
¡DEJATE TUS ANTOÑOS EN LA ESCALERA







Andén  
Salida Emergencia

0 0  
ZUMPANGO  
Eco-021



Reforma – Insurgentes view











