

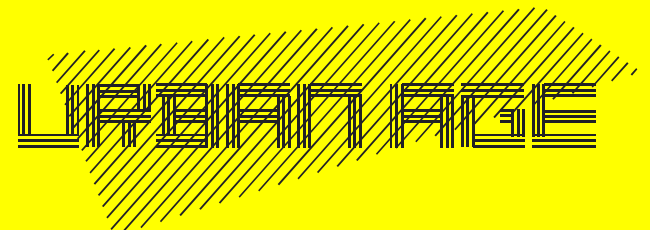
# URBAN AGE INDIA CONFERENCE

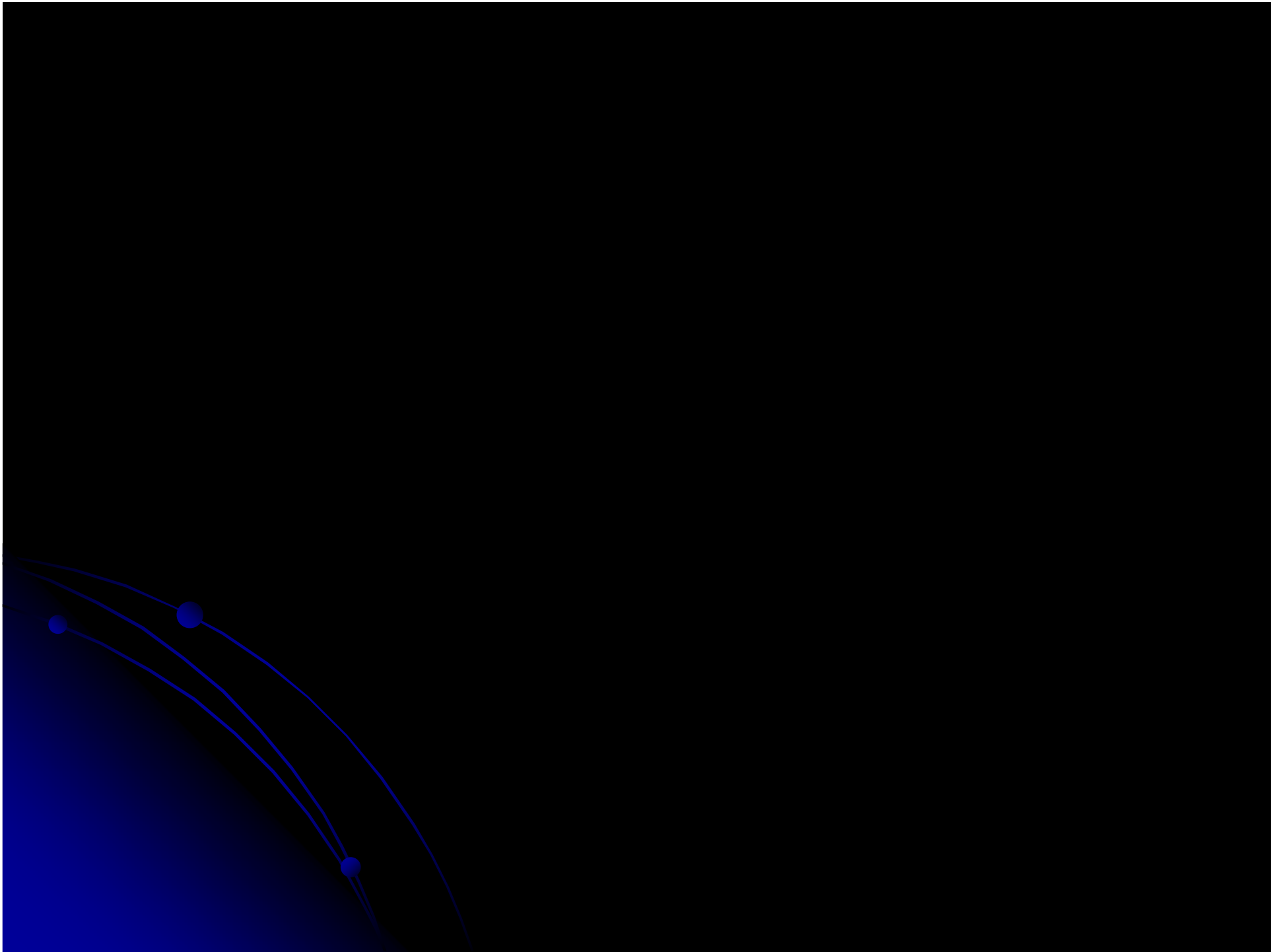
## NOVEMBER 2007

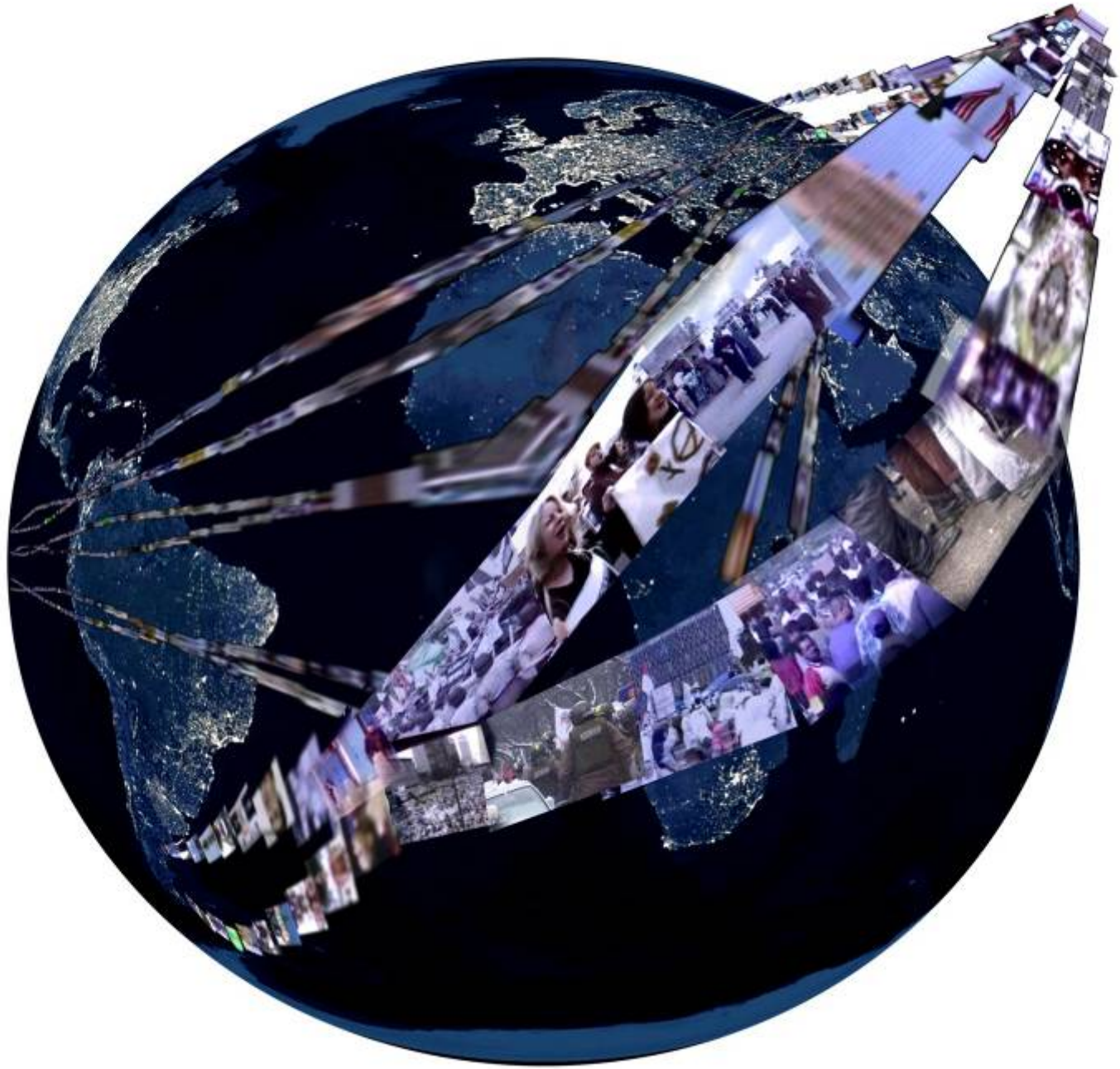
**Saskia Sassen**  
Columbia University

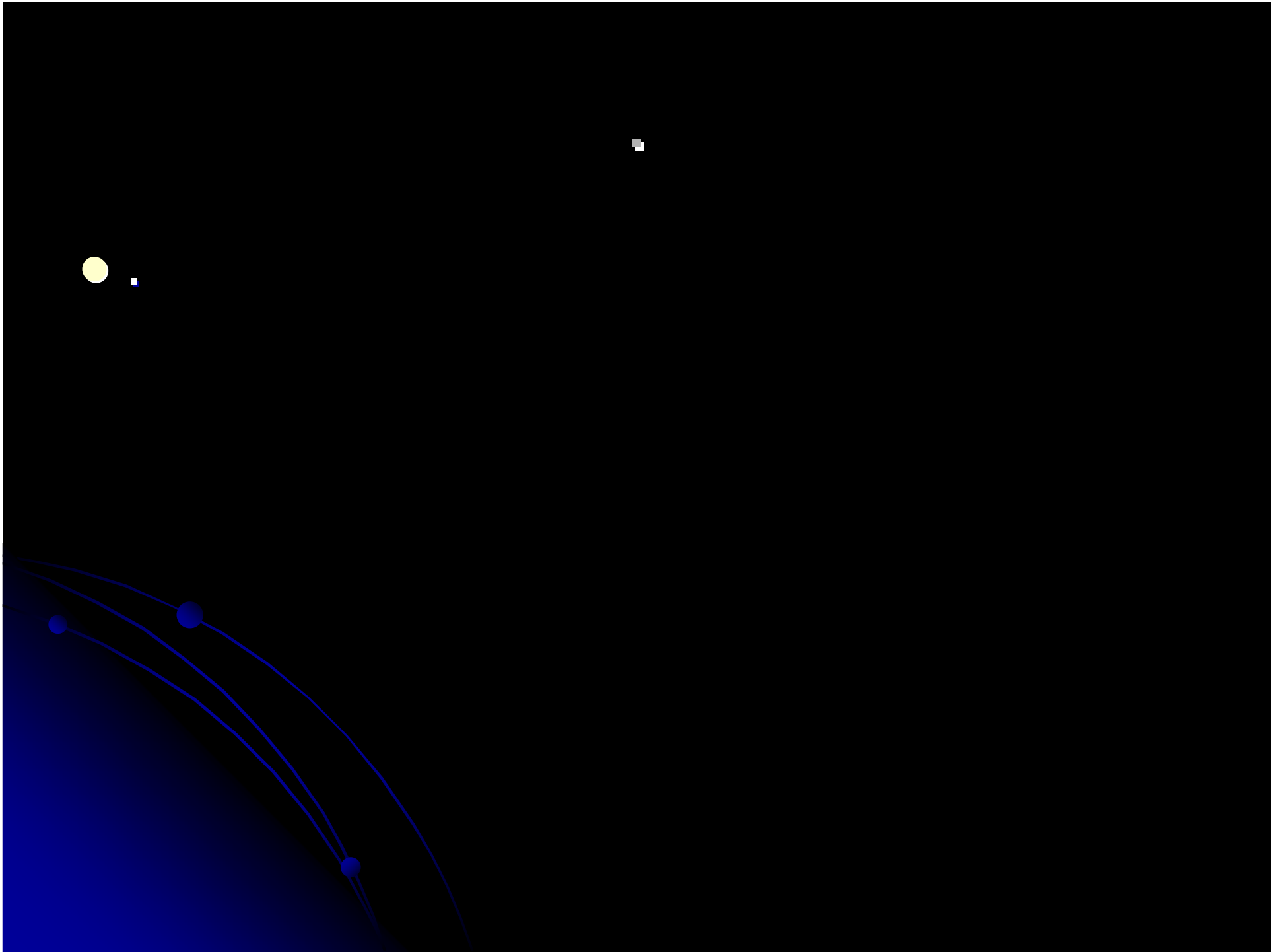
*Cities in a Global Context*

All rights are reserved by the presenter.  
[www.urban-age.net](http://www.urban-age.net)

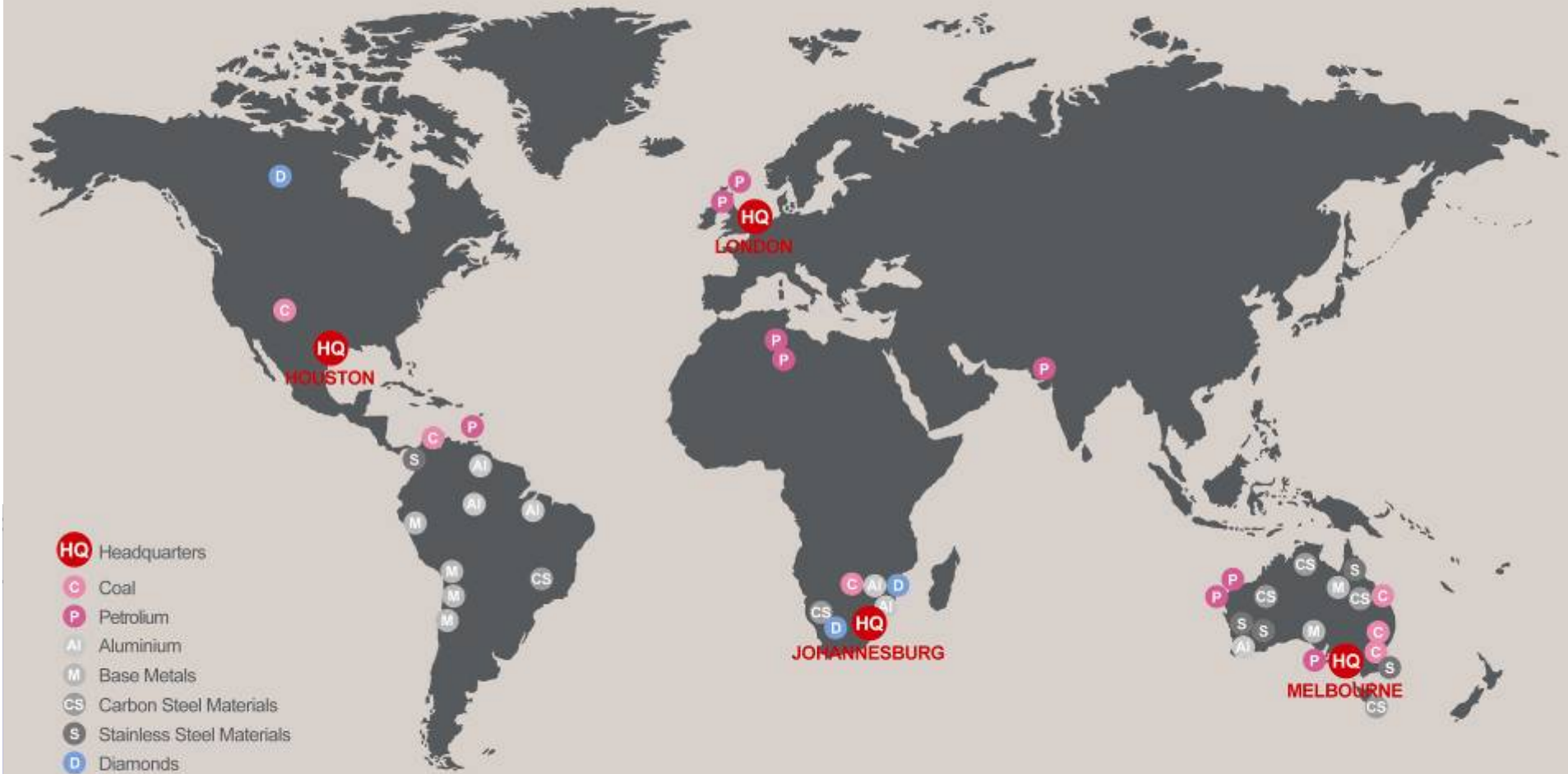






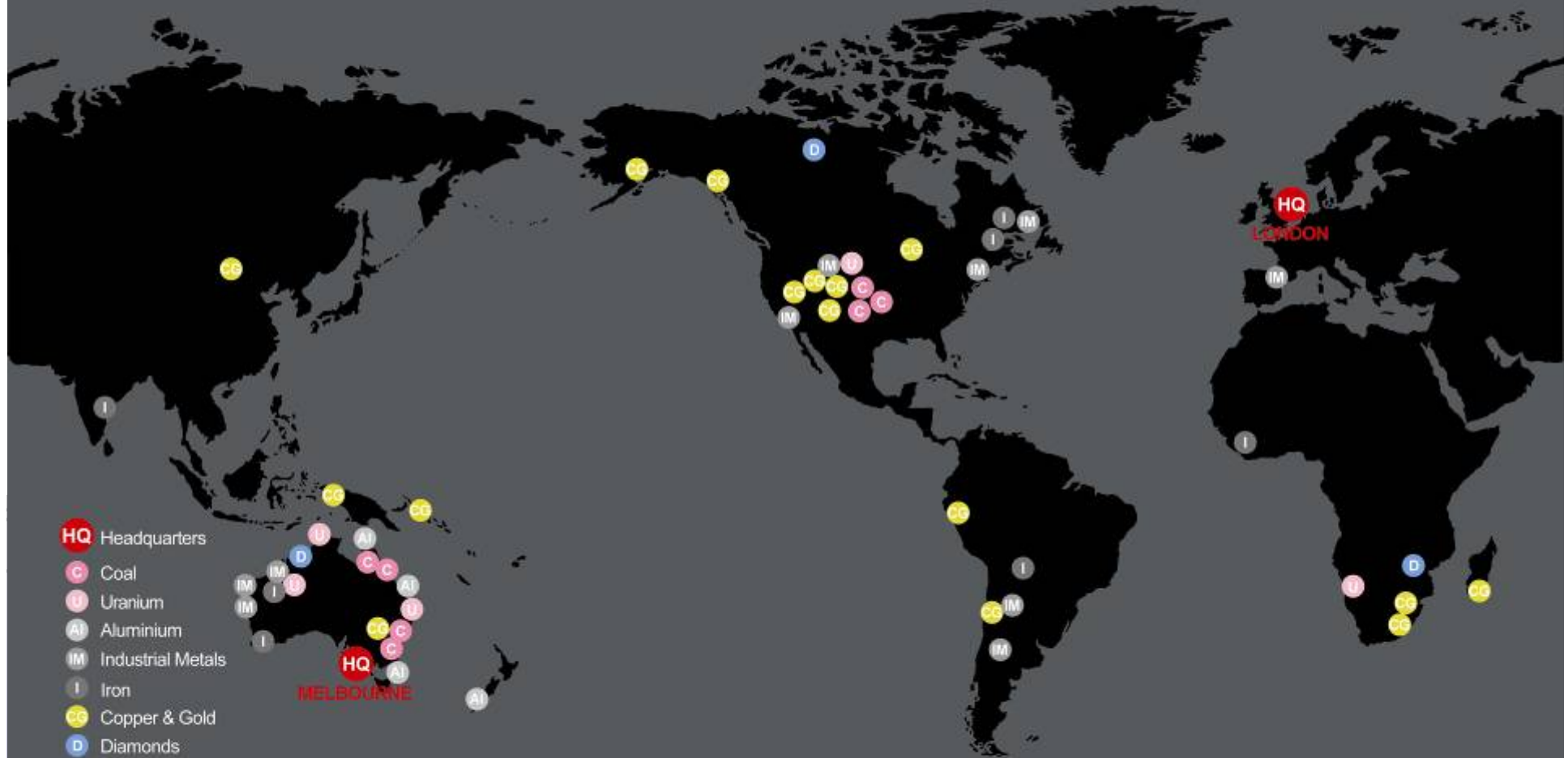


# BHP Billiton

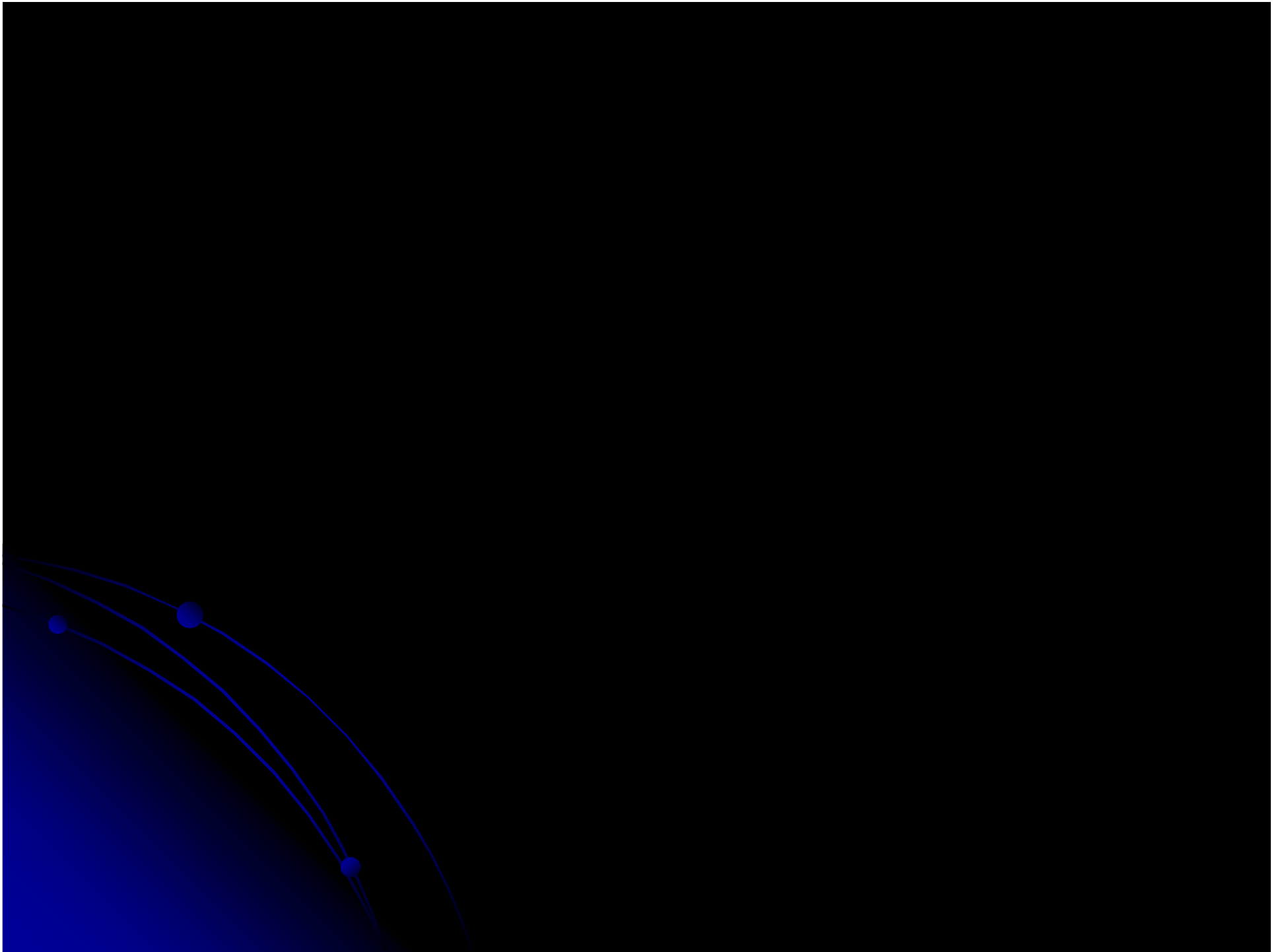


Source: Based on BHP Billiton: Sassen and Schroeder "Cities and Global Warming" 2007 (In Preparation), Urban Age, LSE, Cities Program

# Rio Tinto



Source: Based on Rio Tinto, Sassen and Schroeder "Cities and Global Warming" 2007 (In Preparation), Urban Age, LSE, Cities Program

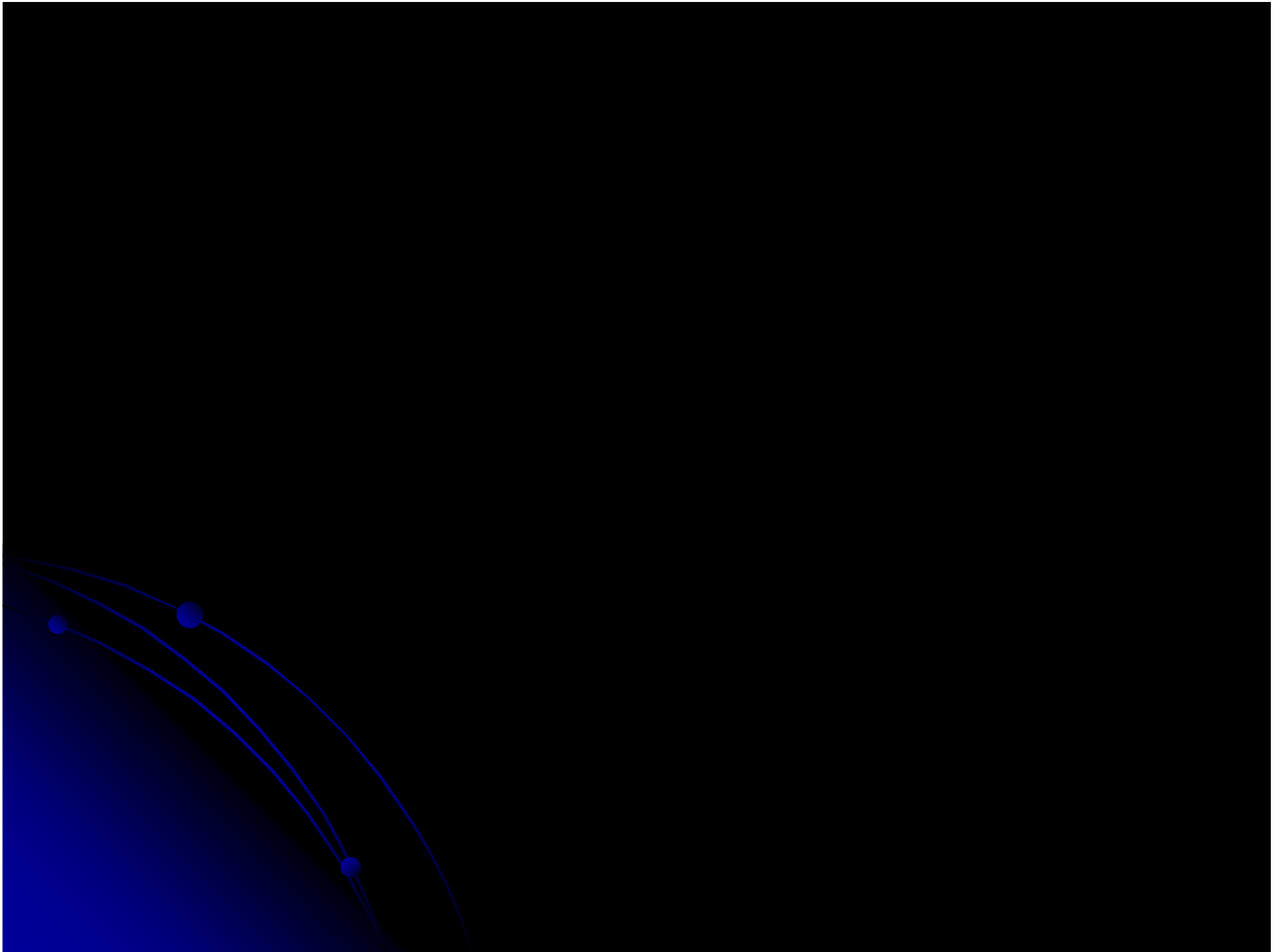




# Manhattan: An Acute Case (And a heuristic moment)

- In 1980, the top 20% of earners made 21 times what the bottom fifth made in Manhattan, which ranked 17th among the nation's counties in income disparity.
- In 1990, the top 20% in Manhattan made 32 times what the bottom 20% made, or \$174,486 versus \$5,435.”
- Today the top 20% of earners in Manhattan make 52 times what the lowest 20% make - \$365,826 compared with \$7,047. This is the widest income gap of all US counties





	GCOC Index	City
1	77.79	London
2	73.80	New York
3	68.09	Tokyo
4	67.19	Chicago
5	62.32	Hong Kong
6	61.95	Singapore
7	61.34	Frankfurt
8	61.19	Paris
9	60.70	Seoul
10	59.05	Los Angeles
11	57.30	Amsterdam
12	57.11	Toronto
13	56.47	Boston
14	56.26	Sydney
15	56.14	Copenhagen
16	56.06	Madrid
17	54.51	Stockholm
18	54.36	San Francisco
19	54.33	Zurich
20	54.19	Atlanta

# INVESTOR PROTECTION

19	85.19	London
20	75.19	Tokyo
21	74.81	Brussels
22	67.78	Copenhagen
23	67.41	Santiago
24	64.07	Bogota
25	64.07	Warsaw
26	64.07	Mumbai
27	64.07	New Delhi
28	63.7	Mexico City
29	62.96	Bangkok
30	60.74	Stockholm

## FINANCIAL SERVICES NETWORK

## TOTAL VALUE EQUITIES TRADING

11	60	Madrid	11	68.97	Amsterdam
12	59	Chicago	12	68.85	Sydney
13	56	Zurich	13	66.59	Hong Kong
14	56	Sydney	14	59.89	Stockholm
15	54	Los Angeles	15	59.11	Shanghai
16	54	Mexico City	16	51.14	Mumbai
17	54	Mumbai	17	44.02	Moscow
18	54	Sao Paulo	18	39.41	Madrid
19	53	Toronto	19	37.46	Chicago
20	52	Bangkok	20	36.95	Shenzhen
21	52	Dublin	21	32.49	Johannesburg

# CORPORATE TAX BURDEN

51	47.92	Moscow
52	47.92	St. Petersburg
53	45.38	Mumbai
54	45.38	New Delhi
55	43.96	Chengdu
56	43.96	Shanghai
57	43.96	Shenzhen
58	43.96	Beijing
59	42.59	Buenos Aires
60	41.73	Caracas
61	38.14	Bogota
62	35.25	Rio de Janeiro
63	35.25	Sao Paulo

# QUALITY OF LIFE

52	70	Shanghai
53	66	Jakarta
54	64	Beirut
55	62	Cairo
56	62	St. Petersburg
57	60	Dubai
58	56	Beijing
59	52	Mumbai
60	52	Shenzhen
61	50	Chengdu
62	44	New Delhi
63	24	Riyadh

# BASIC SERVICES

52	61	Riyadh
53	61	Bogota
54	60	Caracas
55	58	Mexico City
56	58	Moscow
57	56	Chengdu
58	56	Jakarta
59	54	Shenzhen
60	50	New Delhi
61	48	St. Petersburg
62	47	Mumbai
63	35	Beirut



# HEALTH AND SAFETY

52	56.25	Rio de Janeiro
53	55	Cairo
54	55	Sao Paulo
55	52.5	Mexico City
56	51.25	Bogota
57	50	Beirut
58	48.75	New Delhi
59	45	Mumbai
60	43.75	Caracas
61	43.75	St. Petersburg
62	42.5	Jakarta
63	40	Moscow

# NUMBER OF COMMODITY TIES CONTRACTS

# FINANCIAL FLOW DIMENSION

1	100	New York	1	82.86	London
2	91.94	London	2	68.58	New York
3	90.13	Chicago	3	55.84	Chicago
4	66.26	Tokyo	4	53.5	Frankfurt
5	46.48	Shanghai	5	53.39	Tokyo
6	38.76	Mumbai	6	53	Seoul
7	20.89	Kuala Lumpur	7	43.22	Paris
8	20.58	Sao Paulo	8	41.22	Madrid
9	20.32	Paris	9	39.09	Milan
10	20.2	Dubai	10	38.71	Mumbai
11	20.06	Buenos Aires	11	38.3	Shanghai
12	20.05	Bangkok	12	38.06	Hong Kong
13	20.03	Sydney	13	37.61	Sydney

# EASE OF DOING BUSINESS

51	60.44	Cairo
52	60.2	Beijing
53	58.09	Moscow
54	57.86	Bogota
55	57.55	Riyadh
56	57.01	Chengdu
57	57.01	Jakarta
58	56.86	Shenzhen
59	55.26	Beirut
60	55.09	Mumbai
61	55.06	St. Petersburg
62	54.93	New Delhi
63	54.31	Caracas

# EASE OF STARTING BUSINESS

52	67.88	Shanghai
53	67.88	Shenzhen
54	60.59	Mumbai
55	60.59	New Delhi
56	57.27	Beirut
57	55.36	Dubai
58	49.43	Cairo
59	47.65	Rio de Janeiro
60	47.65	Sao Paulo
61	47.26	Caracas
62	43.86	Jakarta
63	35.57	Riyadh

# EASE OF CLOSING BUSINESS

53	25.75	Sao Paulo
54	24.83	Santiago
55	23.95	Istanbul
56	23.85	Beirut
57	22.65	Cairo
58	20.52	Jakarta
59	18.29	Prague
60	17.39	Mumbai
61	17.39	New Delhi
62	15.42	Dubai
63	12.41	Caracas

# NUMBER OF 5 STARS HOTEL

1	100	London
2	84.48	Dubai
3	58.62	Paris
4	44.83	Bangkok
5	44.83	Madrid
6	41.38	Cairo
7	39.66	Hong Kong
8	39.66	Singapore
9	37.93	Berlin
10	37.93	Shanghai
11	36.21	Beijing
12	34.48	Mumbai

# VOLUME OF COMMERCIAL REAL ESTATE DEVELOPMENT

35	25.72	Mexico City
36	25.45	Melbourne
37	25.31	Geneva
38	25.23	Mumbai
39	25.06	St. Petersburg
40	24.46	Atlanta
41	23.6	Washington D.C.
42	22.82	Paris
43	22.77	Cairo
44	22.72	Brussels
45	22.54	Chengdu



# GOOGLE HITS FOR CITY NAME

32	7.76	Milan
33	7.73	Santiago
34	7.7	Dubai
35	7.2	San Francisco
36	6.97	Stockholm
37	6.15	Brussels
38	5.98	Jakarta
39	5.07	Geneva
40	5.01	Copenhagen
41	4.81	Mumbai
42	4.81	Shenzhen
43	4.75	Munich
44	3.76	Seoul
45	3.41	Warsaw
46	3.29	Zurich