



Hashim Sarkis
Harvard University

a worldwide series of conferences
on the future of cities

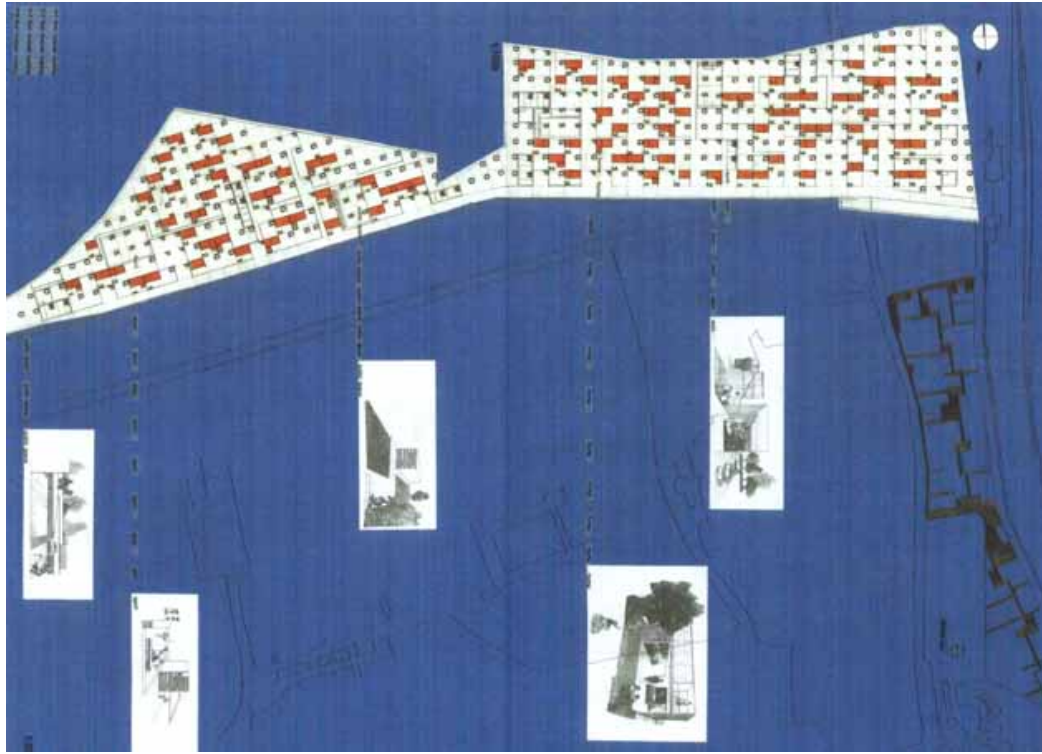
organised by the LSE Cities Programme and the
Alfred Herrhausen Society for International Dialogue

FLEXIBILITY

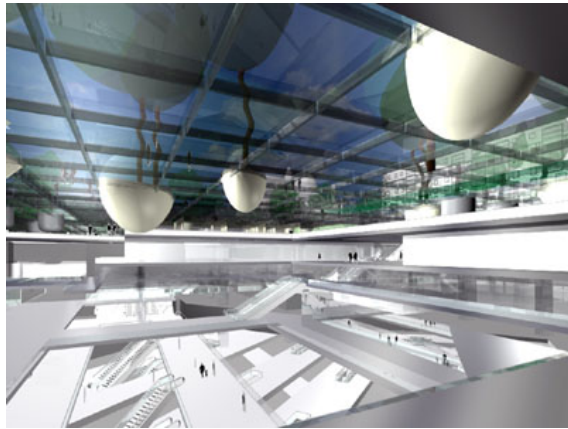


FLEXIBILITY
EXPANDABILITY
VERSATILITY
CONVERTIBILITY
FLUIDITY

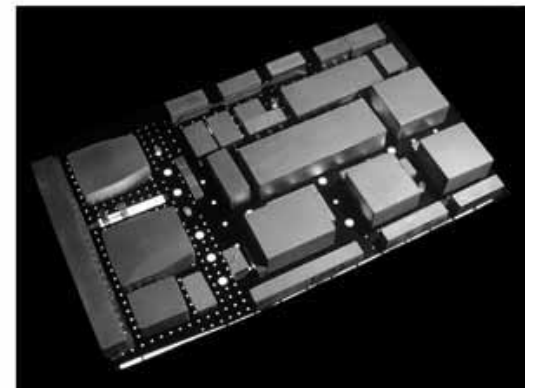
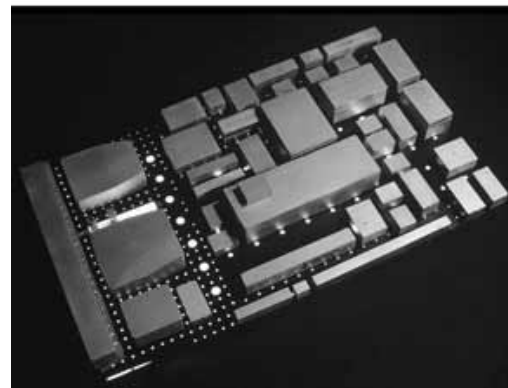
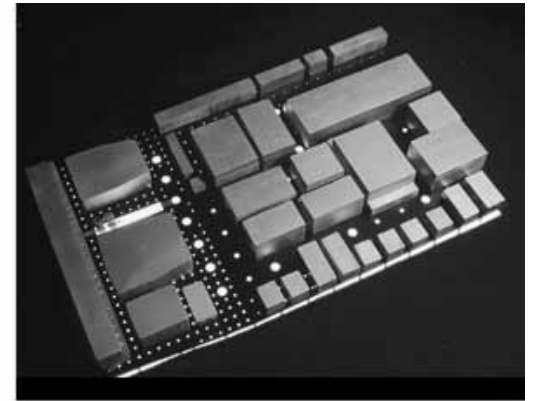
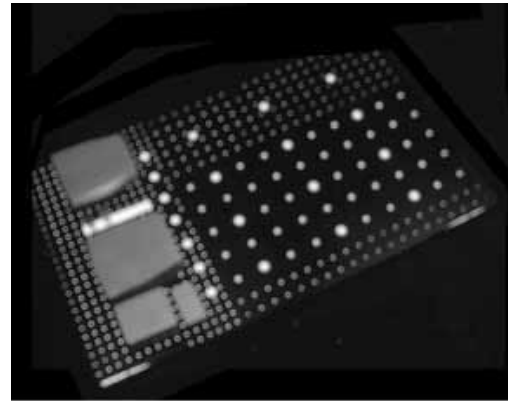
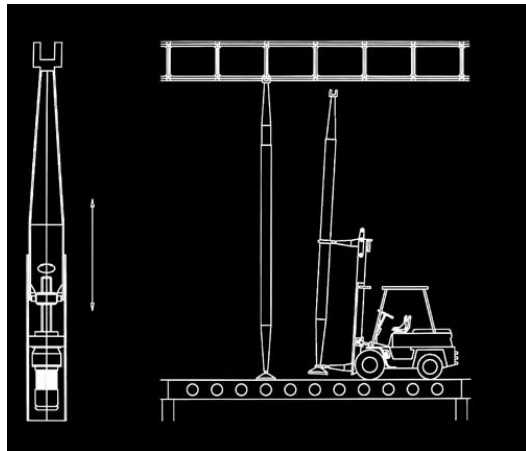
EXPANDABILITY



VERSATILITY



CONVERTIBILITY



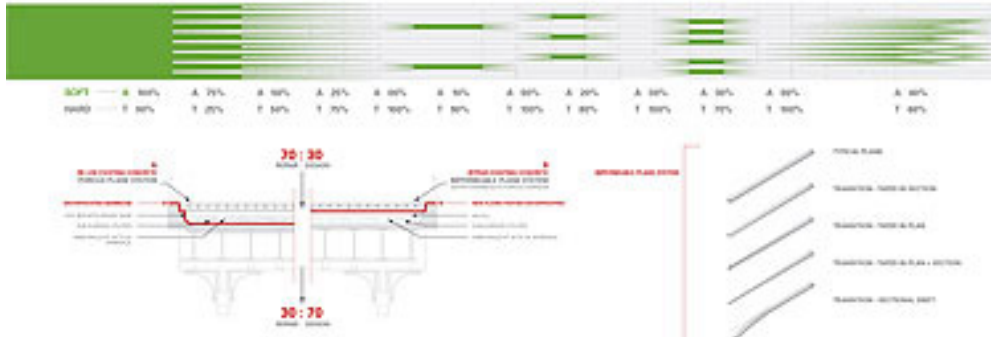
FLUIDITY

WHAT WILL GROW HERE ?

Inspired by the melancholic, unruly beauty of the High Line where nature has reclaimed a once vital piece of urban infrastructure, the team retools this industrial conveyance into a postindustrial instrument of leisure, life and growth. By changing the rules of engagement between plant life and pedestrians, our strategy of **AGRI-TECTURE** combines organic and building materials into gradients of changing proportions that accommodate the wild, the cultivated, the intimate, and the hyper-social. In stark contrast to the speed of Hudson River Park, this parallel linear experience is marked by slowness, distraction and an other-worldliness that preserves the strange character of the High Line. Providing flexibility and responsiveness to the changing needs, opportunities, and desires of the dynamic context, our proposal is designed to remain perpetually unfinished, sustaining emergent growth and change over time.

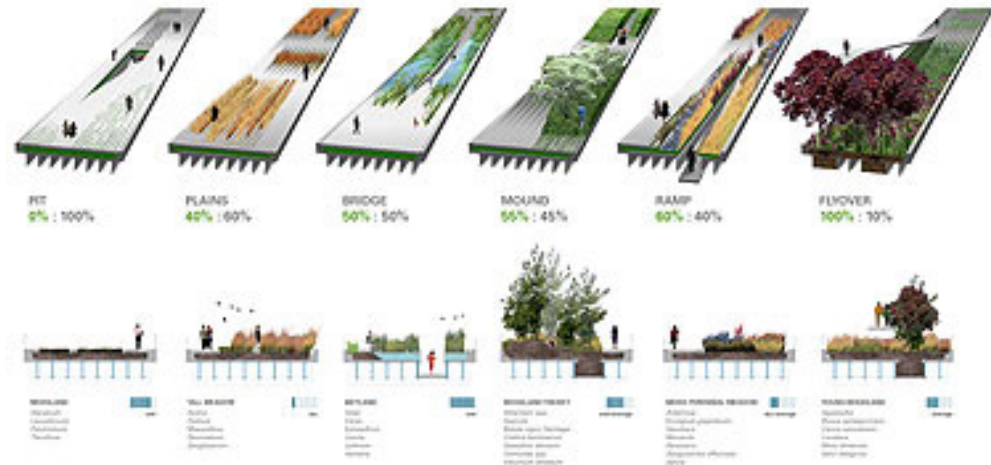
1 AGRI-TECTURE: A FLEXIBLE, RESPONSIVE SYSTEM OF MATERIAL ORGANIZATION WHERE DIVERSE ECOLOGIES MAY GROW.

The ground surface transitions from high-intensity areas (100% hard) to fully vegetated (100% soft), with a variety of experimental gradients in between.

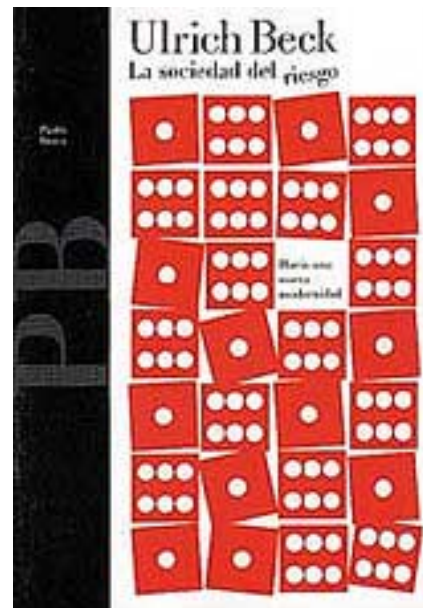


2 A METHODOLOGY FOR CONSTRUCTING HARD SURFACES AND STRUCTURES AS MEANS OF PRODUCING DIVERSE SOCIAL AND NATURAL HABITATS.

Designed as a continuous, single surface, yet built from individual pre-cast units that may fold down to permit travel through the brick structural section of the High Line or fold up to give over it without disturbing the natural "crevices".

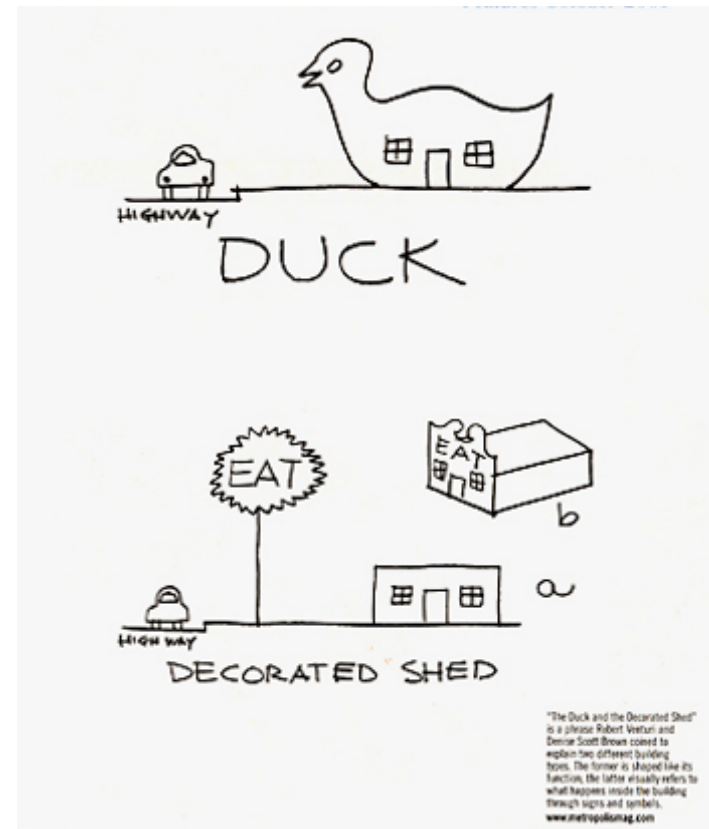
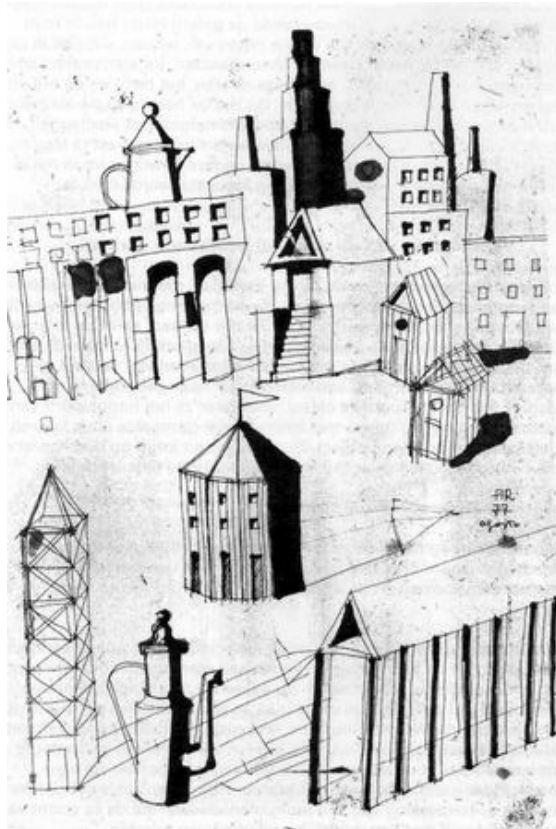


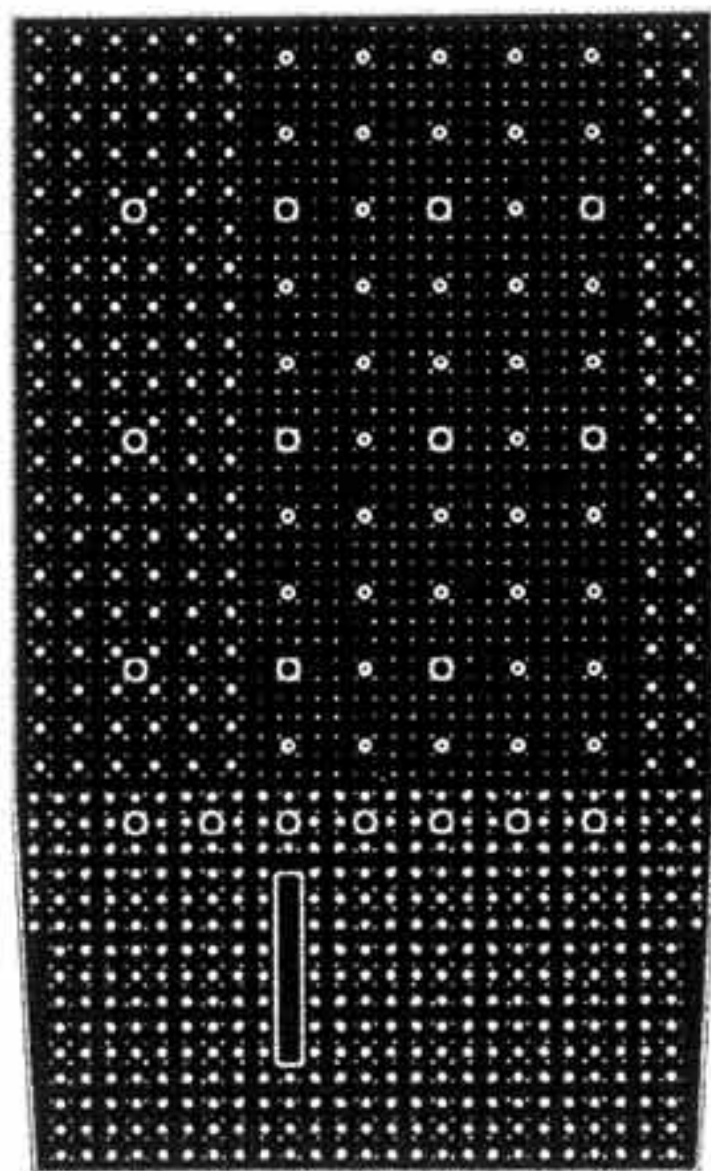
CRITIQUE OF FLEXIBILITY

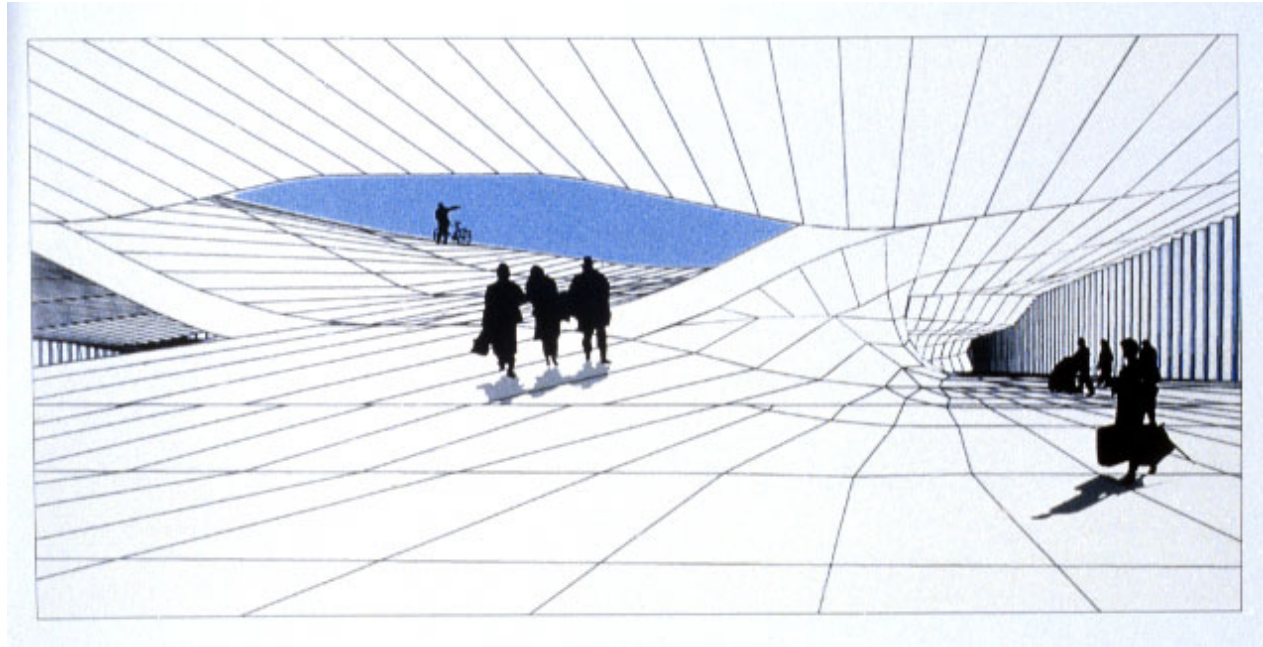




CRITIQUE OF FLEXIBILITY









FLEXIBILITY
RESILIENCE





a worldwide series of conferences
on the future of cities

organised by the LSE Cities Programme and the
Alfred Herrhausen Society for International Dialogue