



Marilyn Taylor
SOM Architects

a worldwide series of conferences
on the future of cities

organised by the LSE Cities Programme and the
Alfred Herrhausen Society for International Dialogue

Columbia University in the City of New York

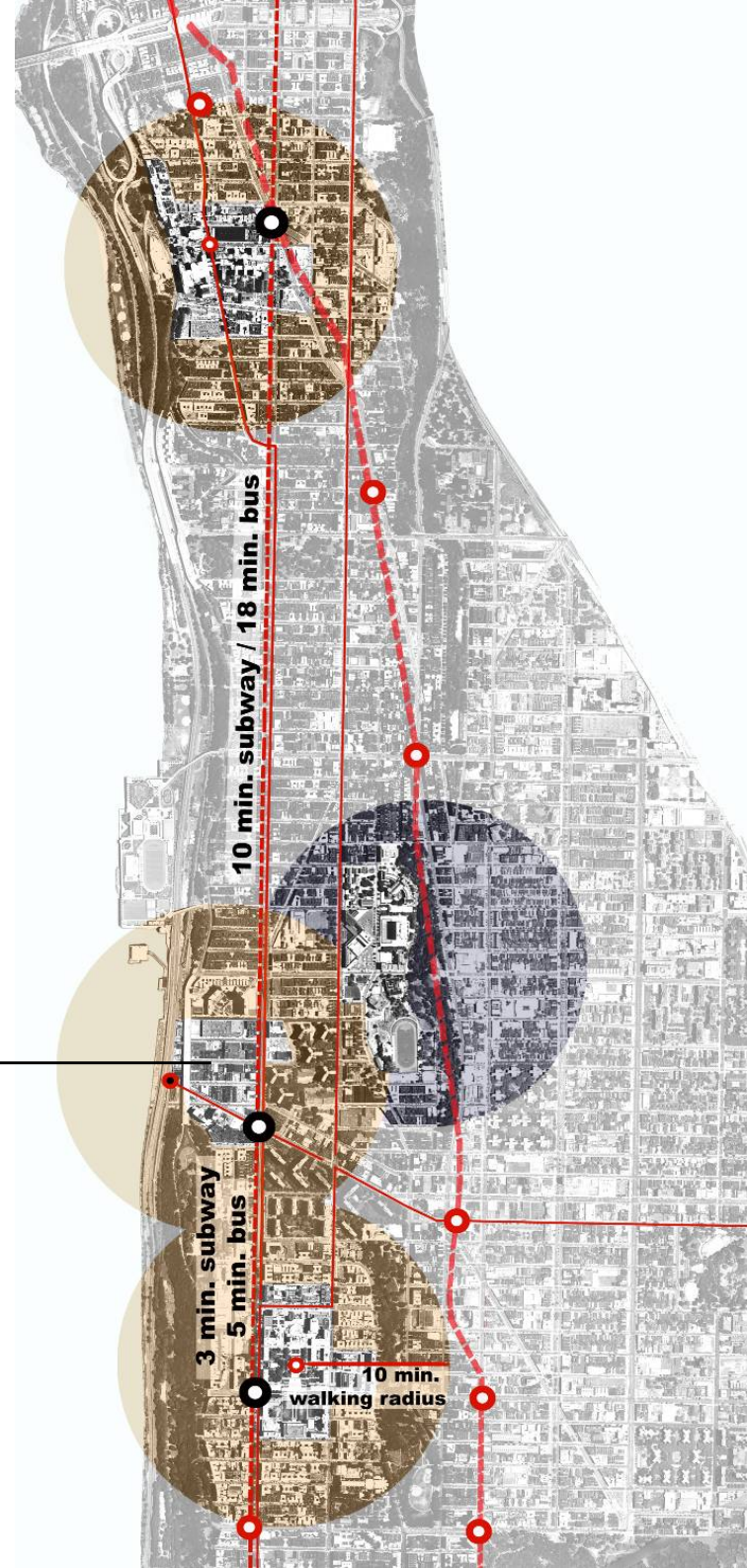
The Essential Roll of Urban Institutions in the Urban Age

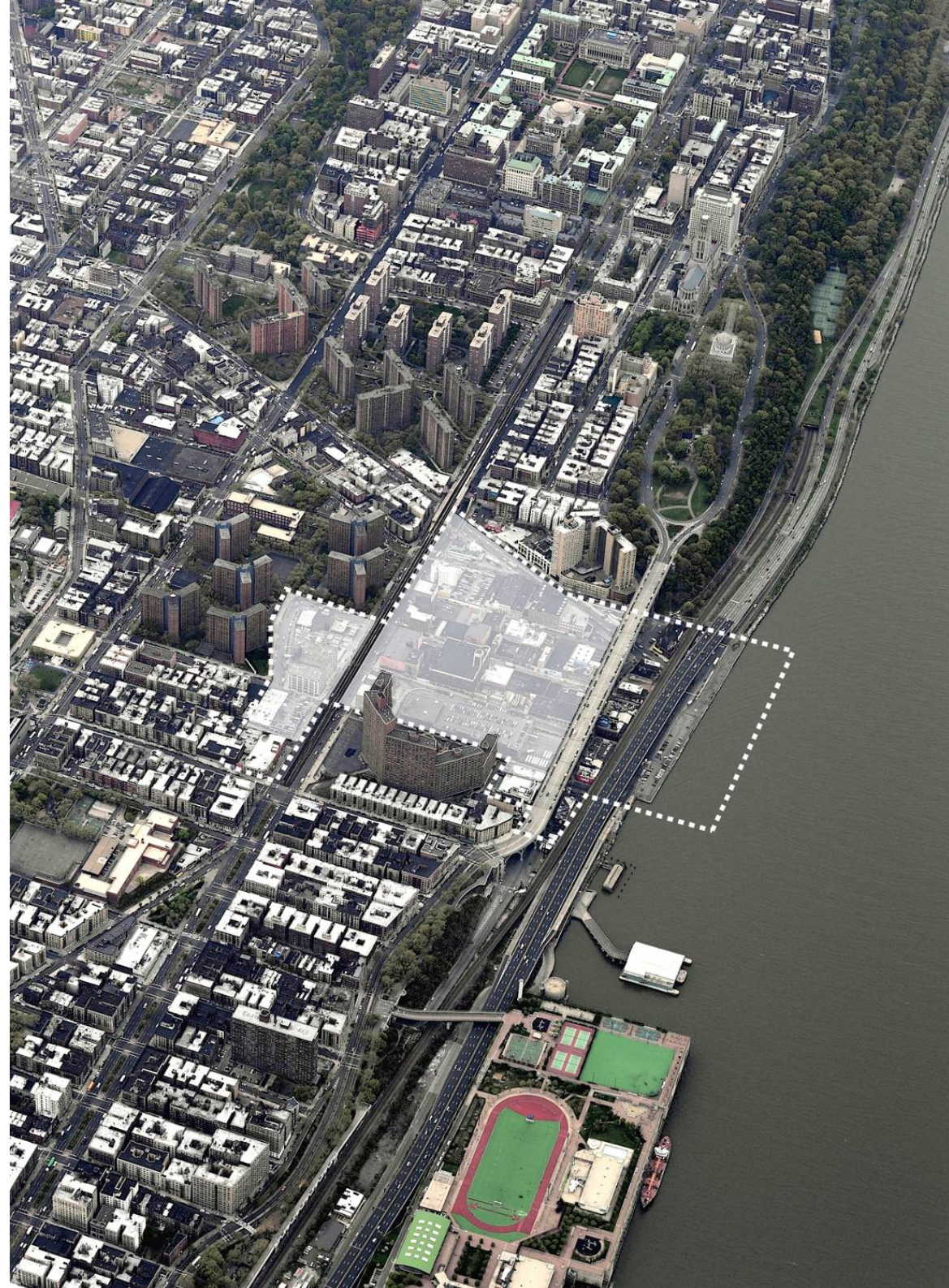
Manhattanville, West Harlem Proposal



Manhattanville Site

Manhattanville Site Area





Manhattanville Site Aerial

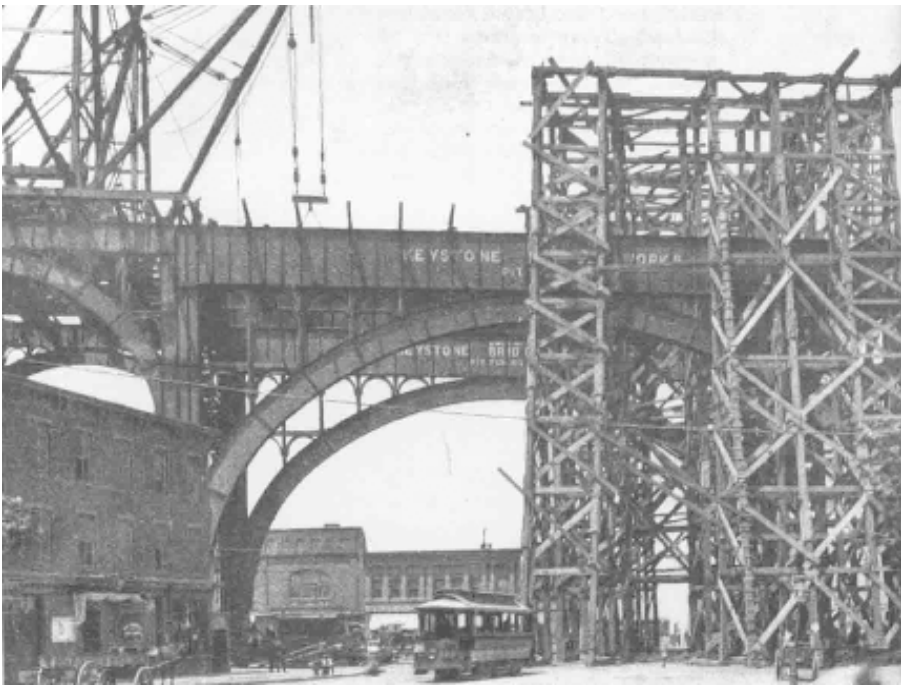
125th Street, Looking East
circa 1930



125th Street, Looking South
circa 1890



Industry



History Construction of the IRT viaduct circa 1900



1917

Prentiss Hall
632 W. 125th Street



The Nash Building
3280 Broadway



The Studebaker Building
615 W. 131st Street

Looking West



Looking South
12th Avenue / Riverside Drive Viaduct



125th Street, Looking West



130th Street, Looking West

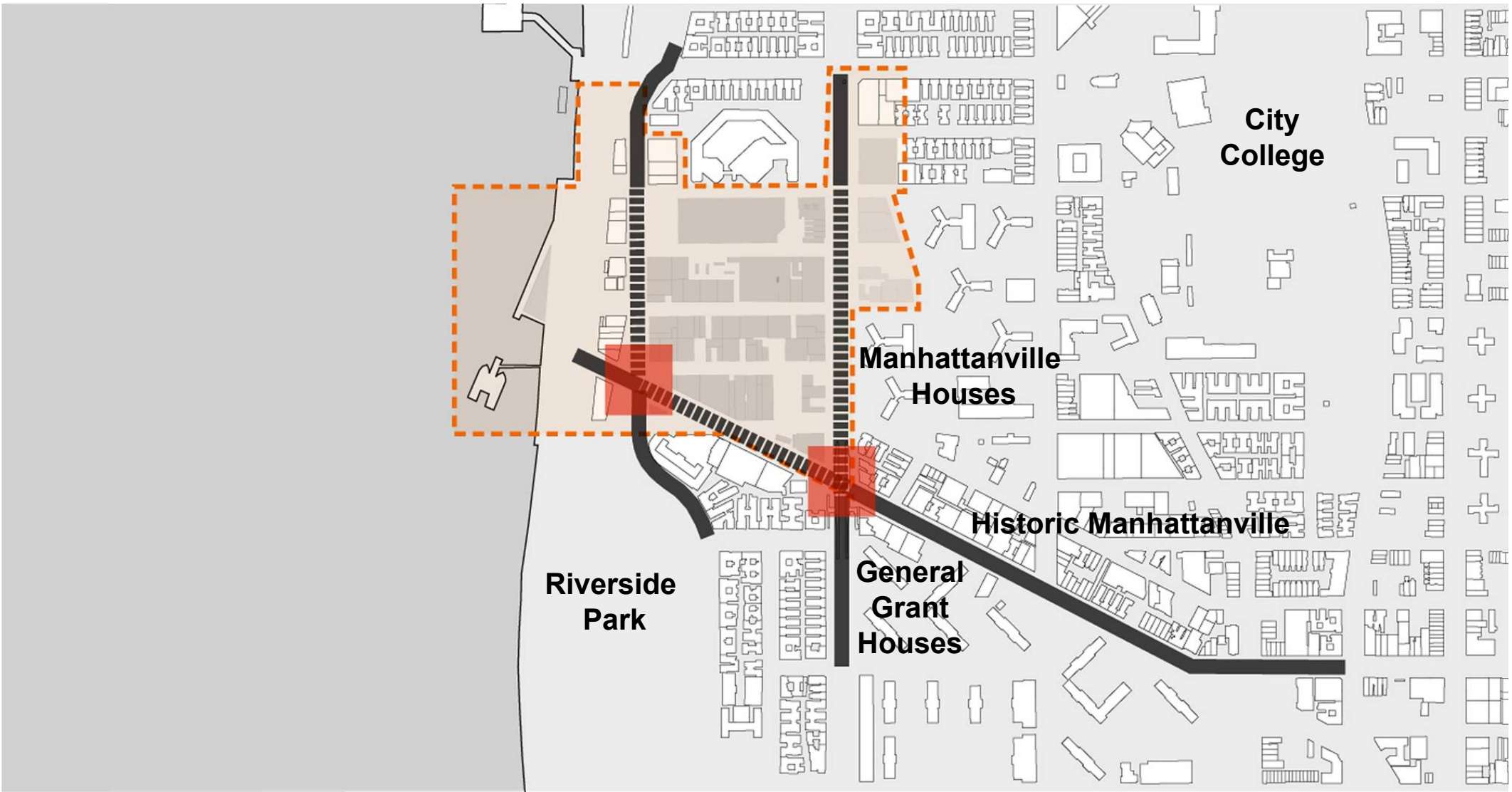


Industrial Obsolescence

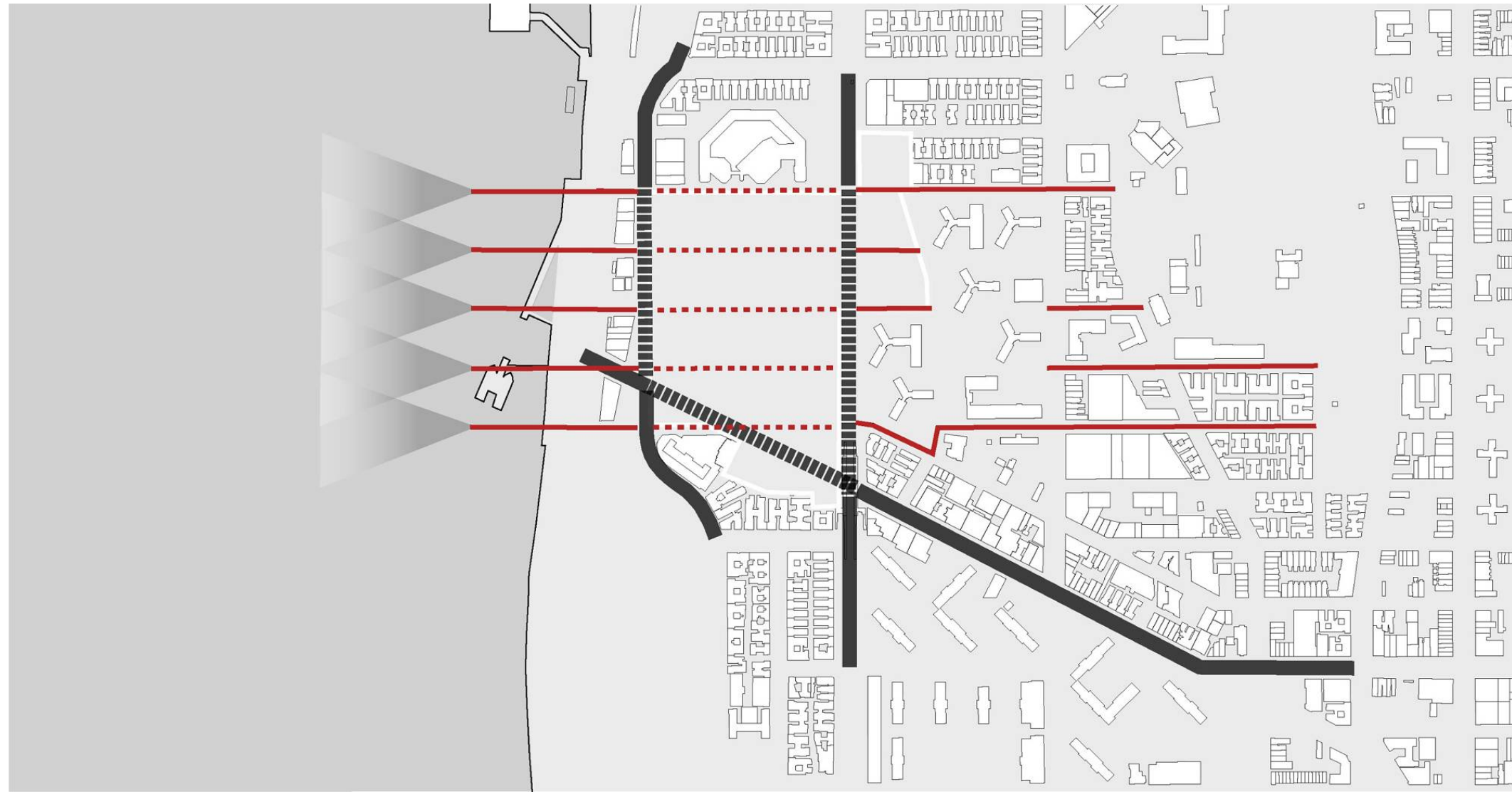
THE PLANNING VISION

Columbia University's proposed expansion in Manhattanville would provide a solution to the University's critical need for space and allow an underutilized area of West Harlem an opportunity for revitalization while strengthening the University's commitment to West Harlem and offering connectivity to its institutions, including City College





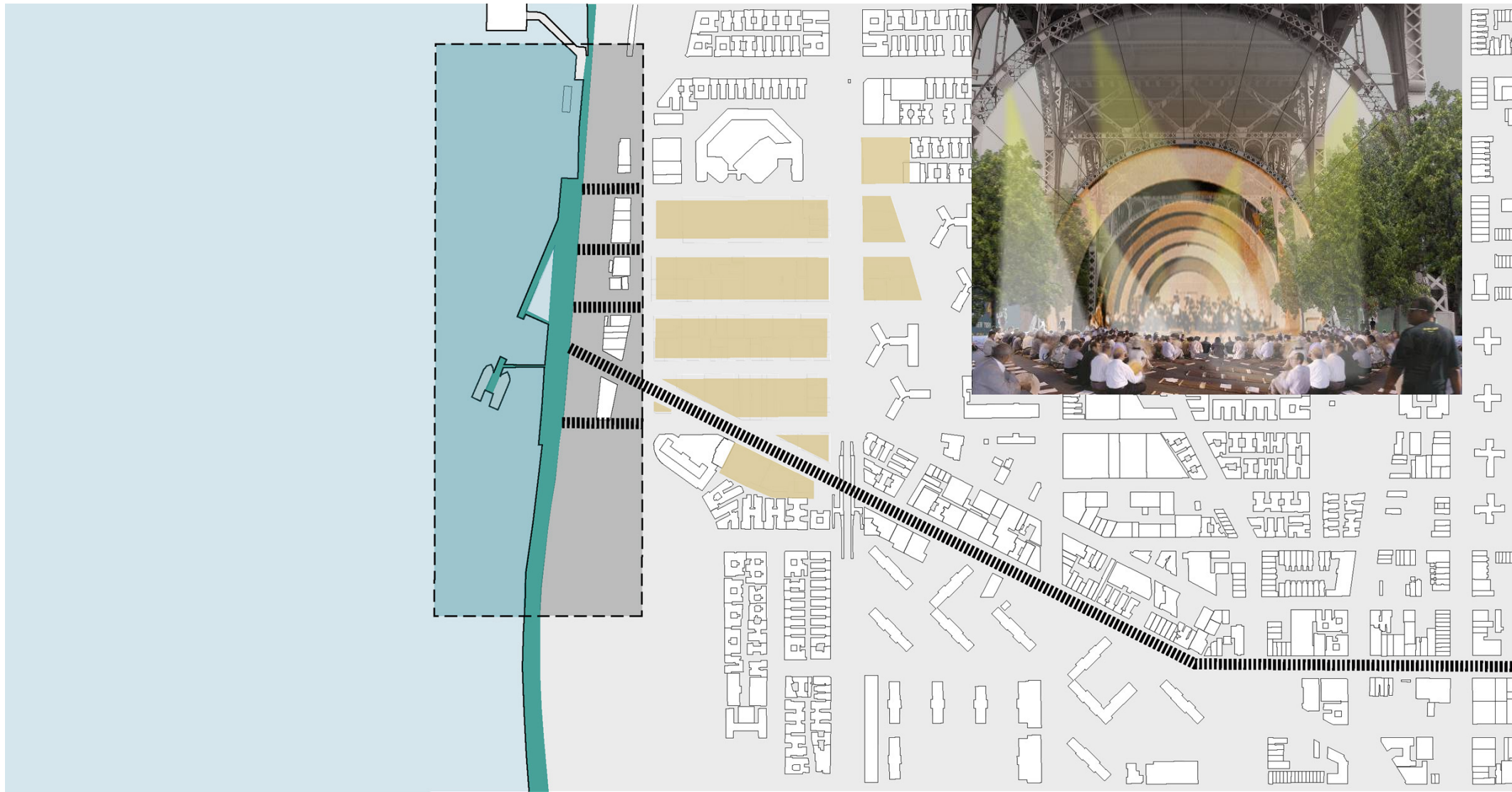
Revitalize 125th Street and Broadway



Retain and Enhance Connectivity and Views through the Cross Streets



**Create a Network of Open Spaces:
North/South connectivity through the Site**



Improve and Encourage Waterfront Access
Contribute to the Development of a Waterfront Destination



Continue 125th Street Active Ground Floor Uses through the Site



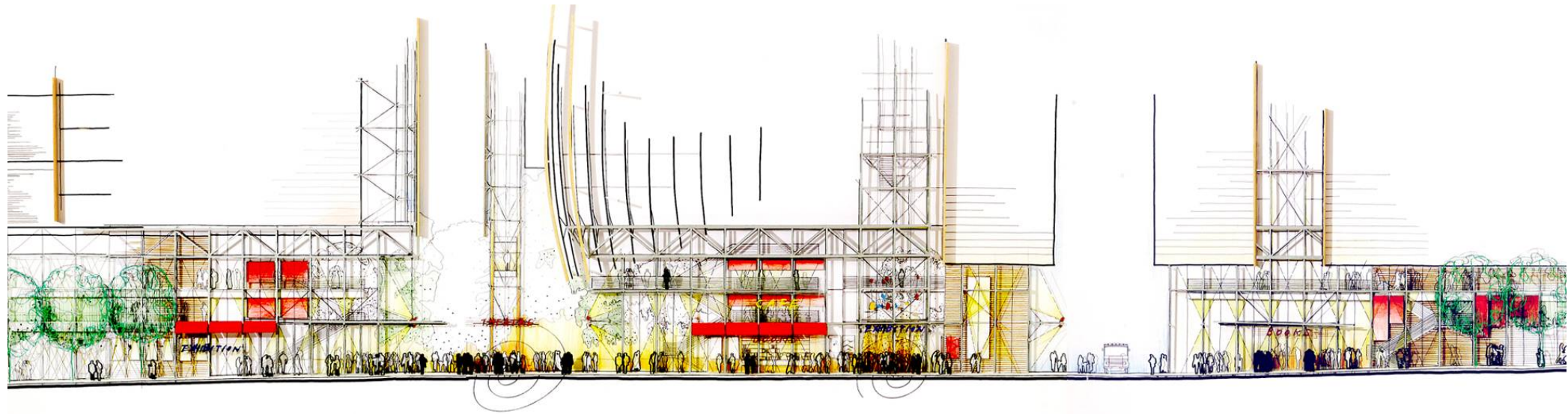
**Continue Active Ground Floor Uses
along Broadway and 12th Avenue**



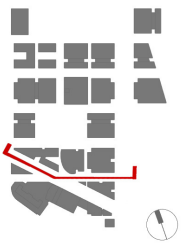
Design in Section



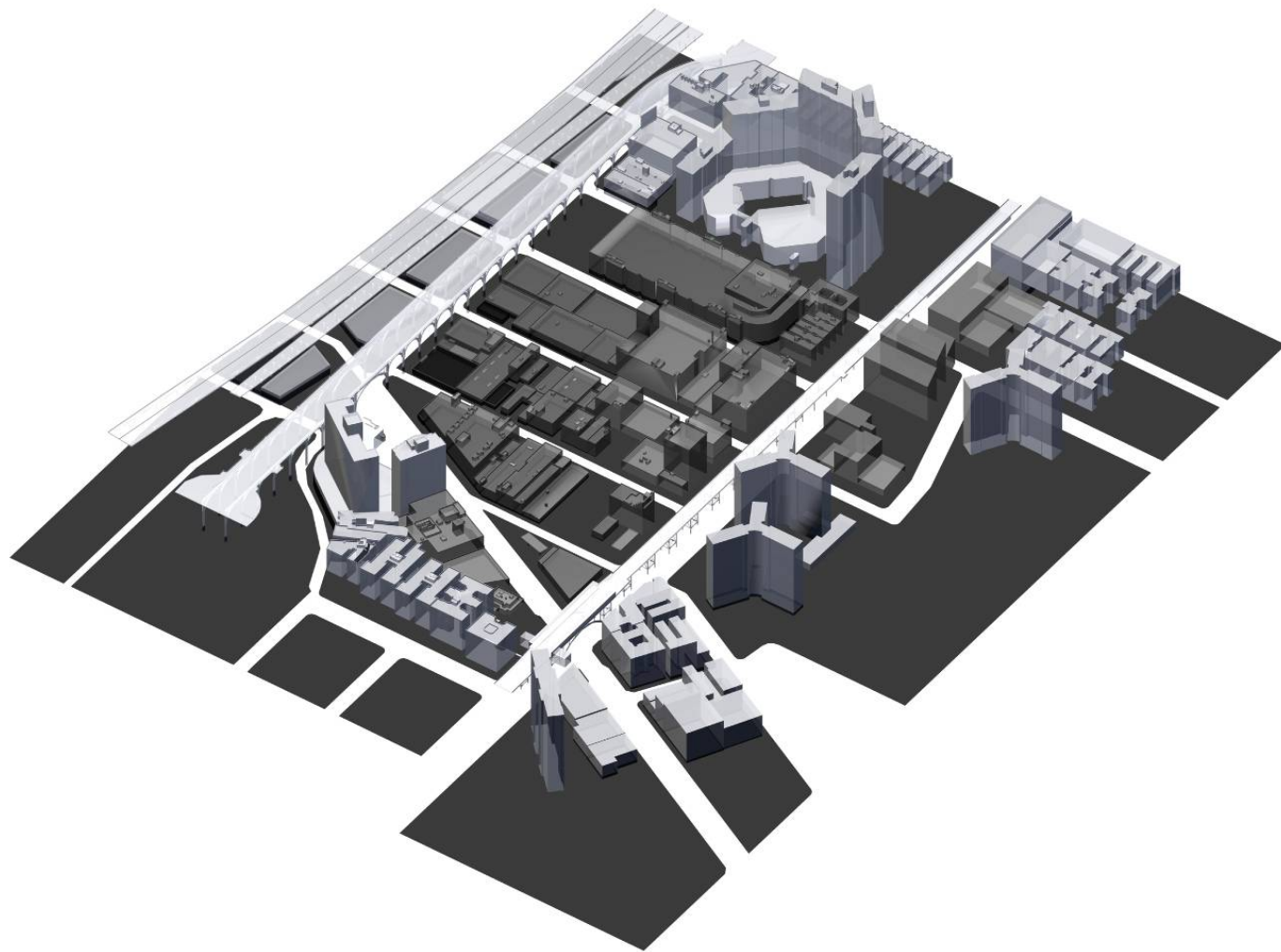
The Architectural Structure Concept



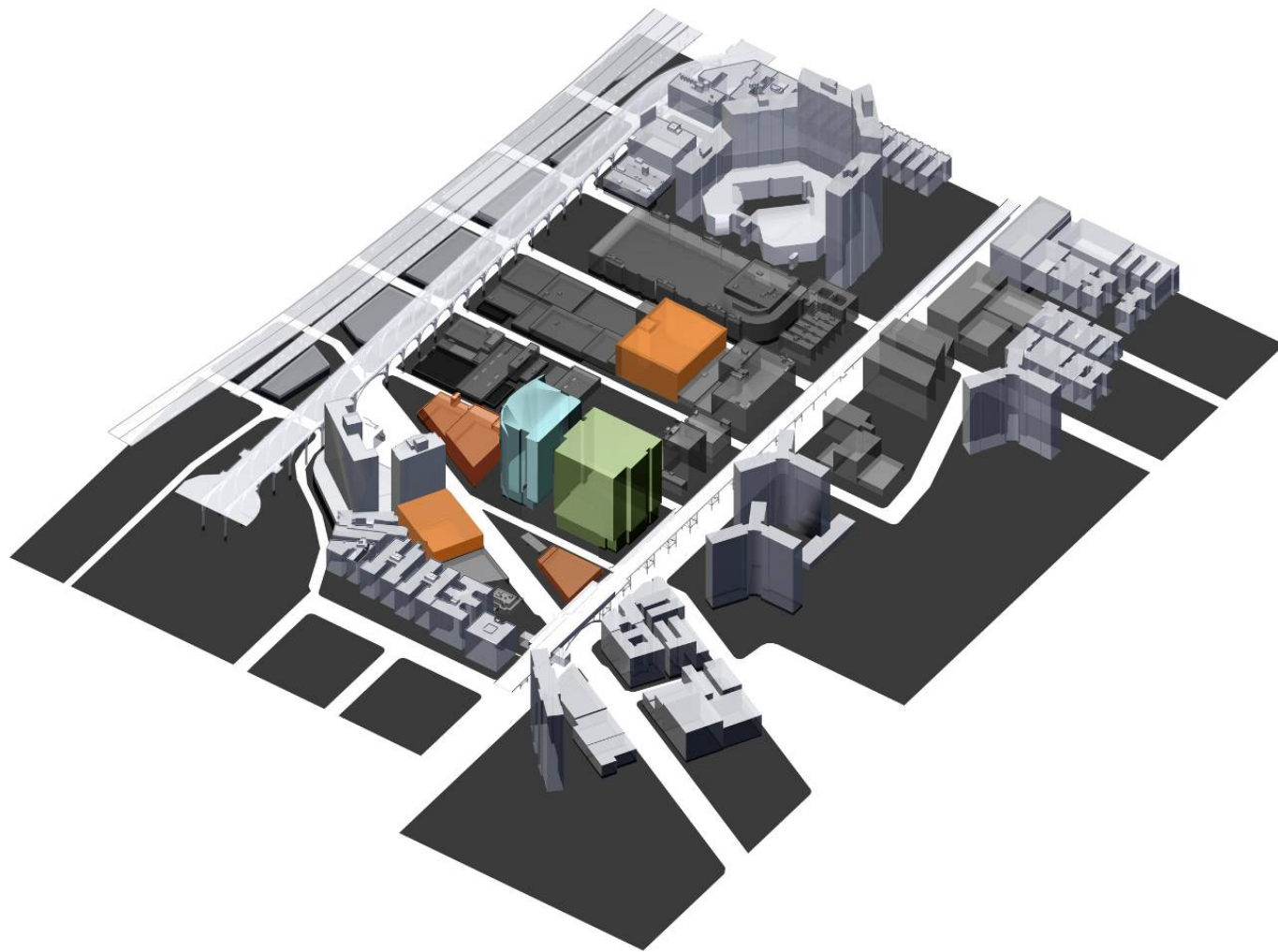
125th Street



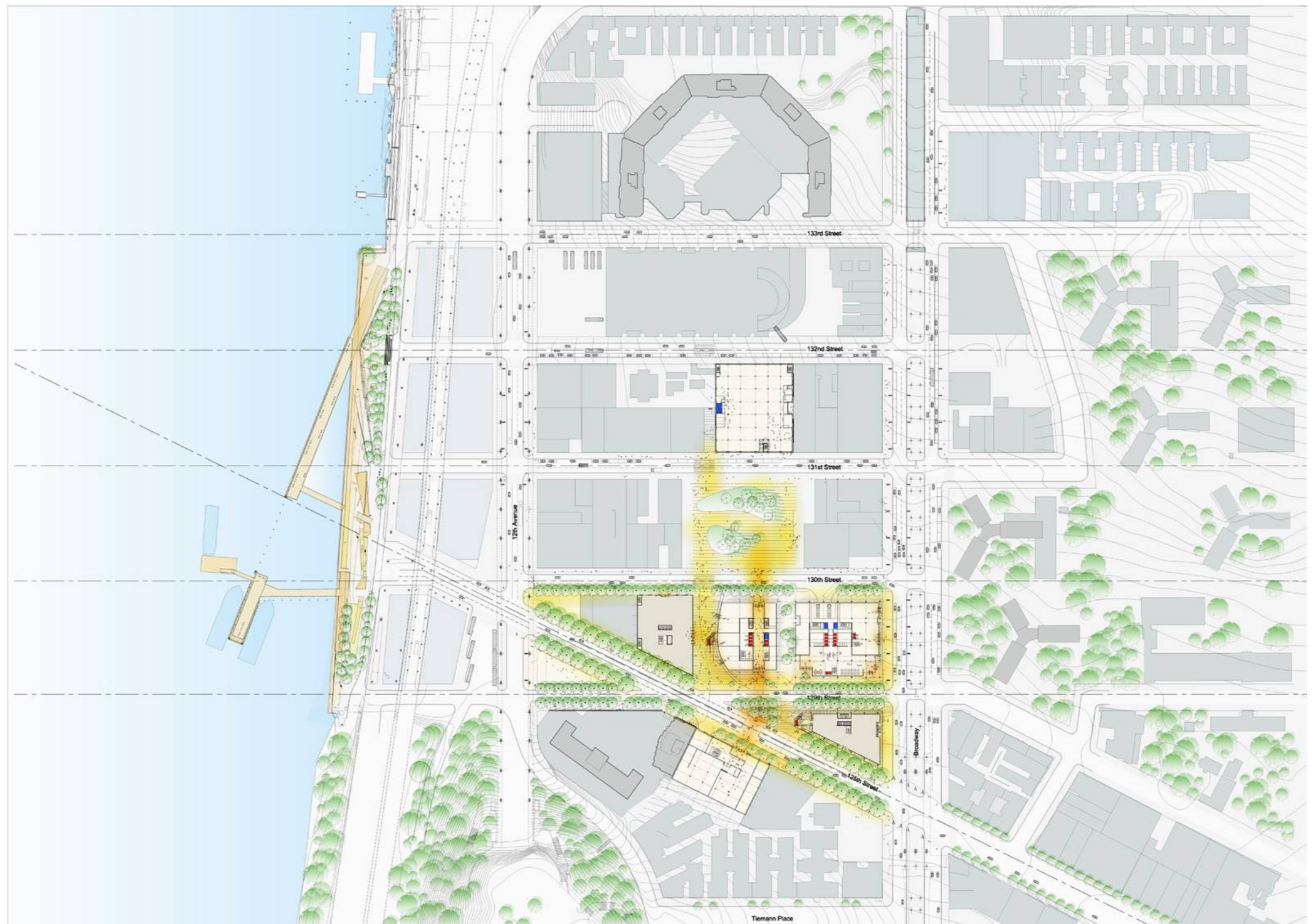
125th Street Ground Floor Elevation



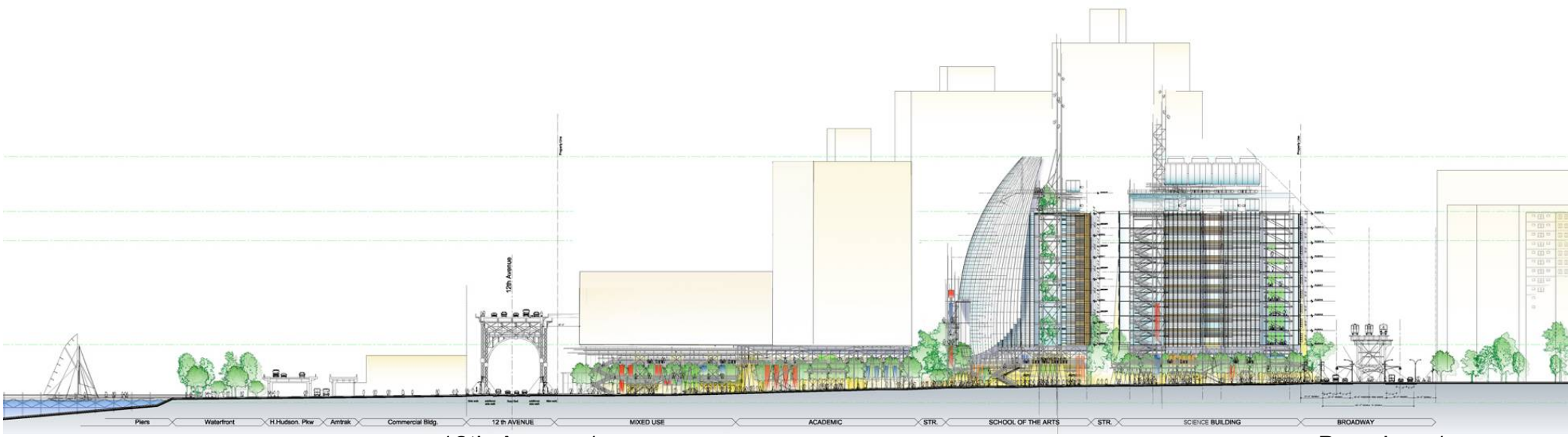
Existing Conditions



Illustrative Massing – Phase One Scheme

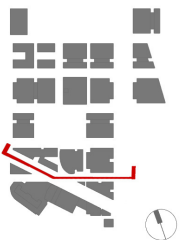


Illustrative Site Plan – Phase One



12th Avenue/
Riverside Drive

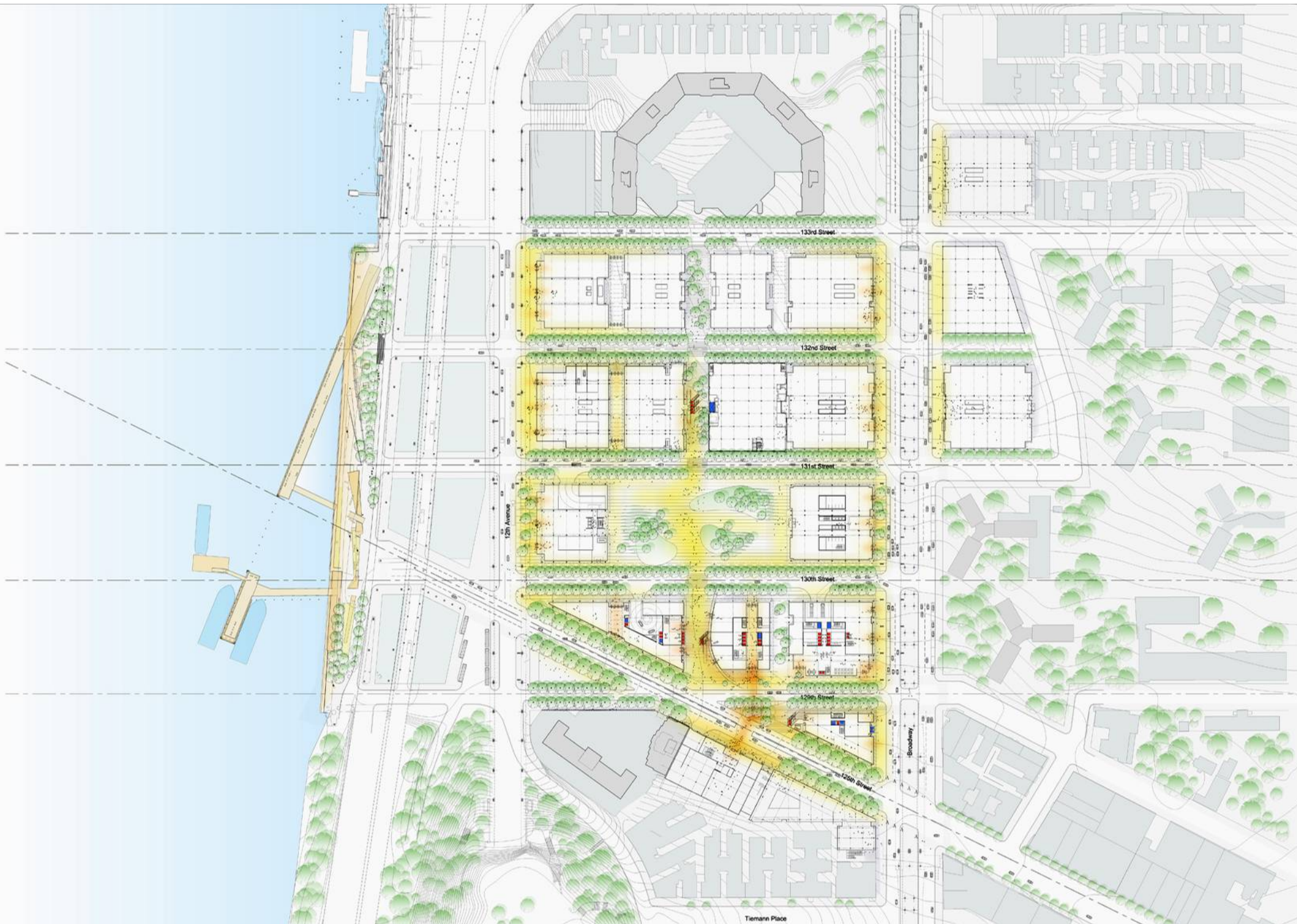
Broadway/
IRT Viaduct



125th Street Elevation – Phase One



Illustrative Massing - Full Build Scheme

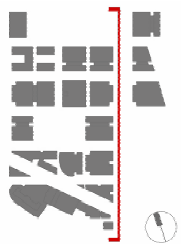


Illustrative Site Plan - Full Build

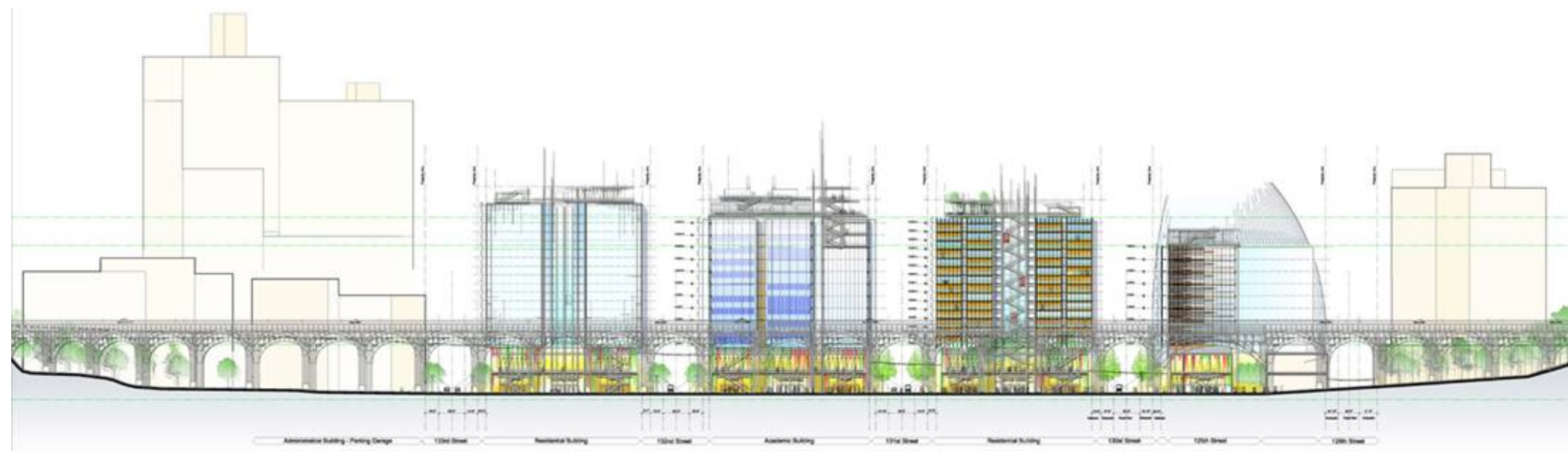


125th Street

133rd Street

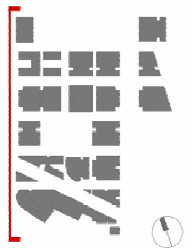


Broadway Elevation

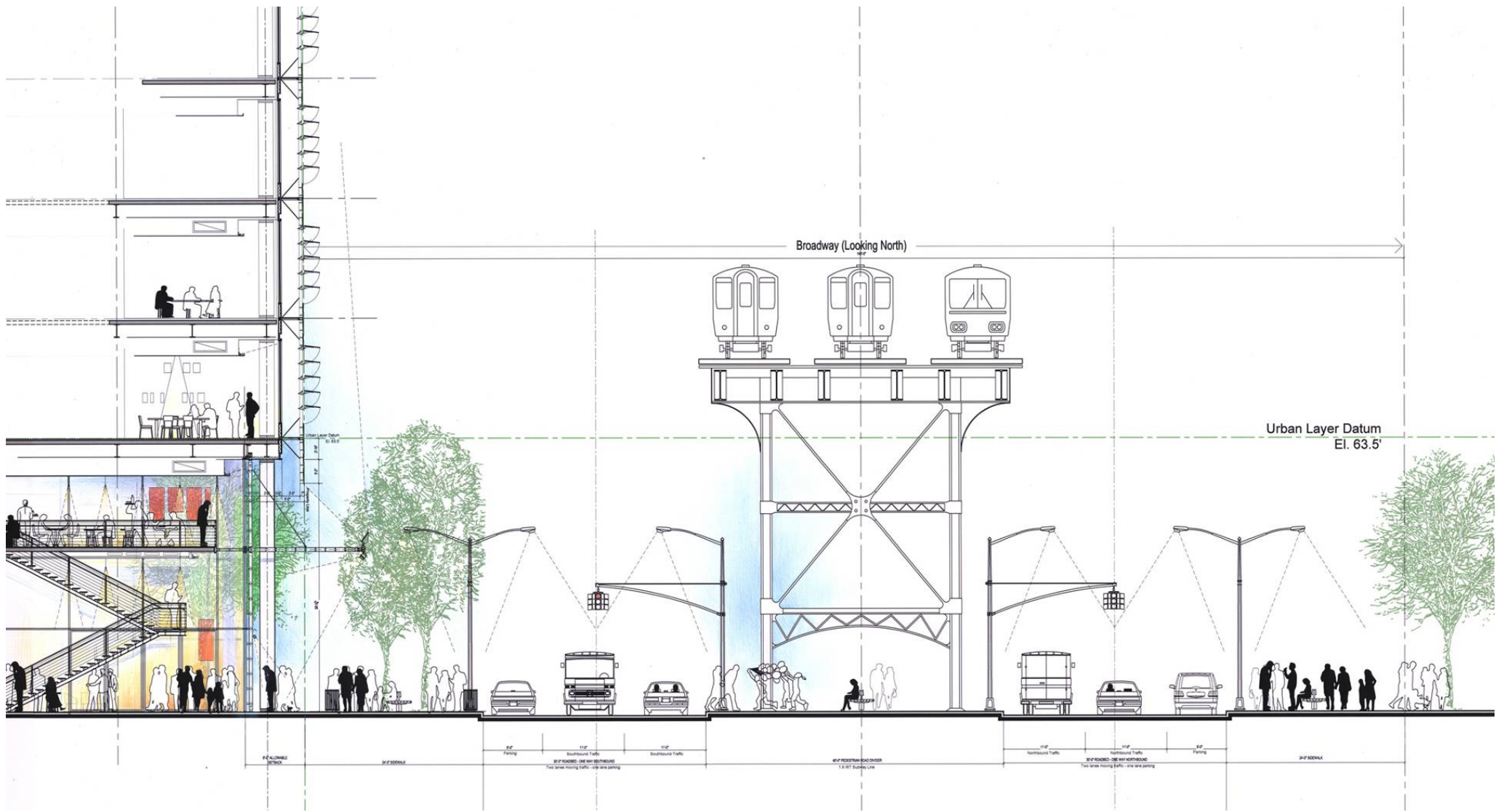


133rd Street

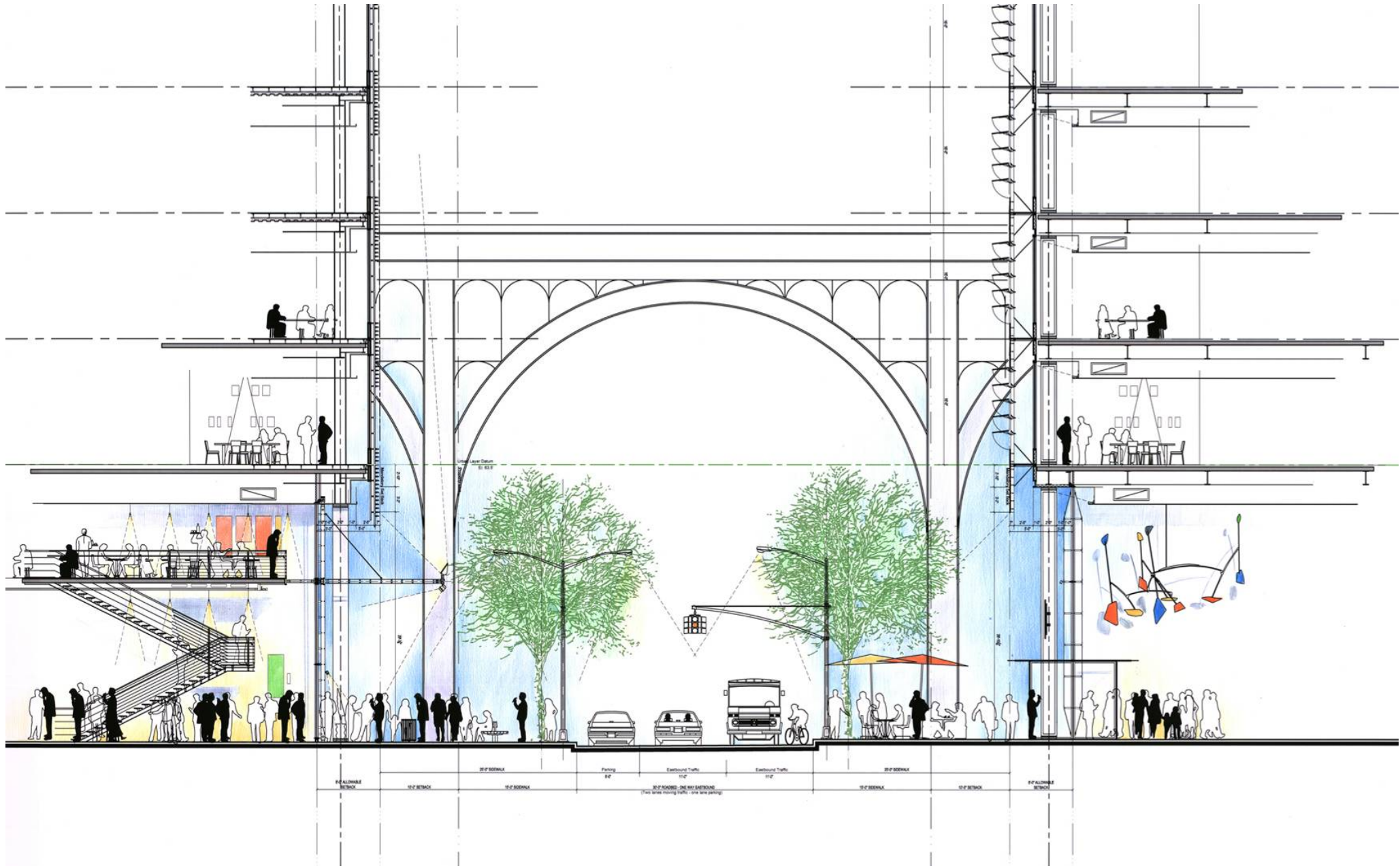
129th Street



12th Avenue Elevation



Illustrative Street Section – Broadway Looking North



Illustrative Street Section – 130th Street Looking West



Landscape – Illustrative Plan of Open Space



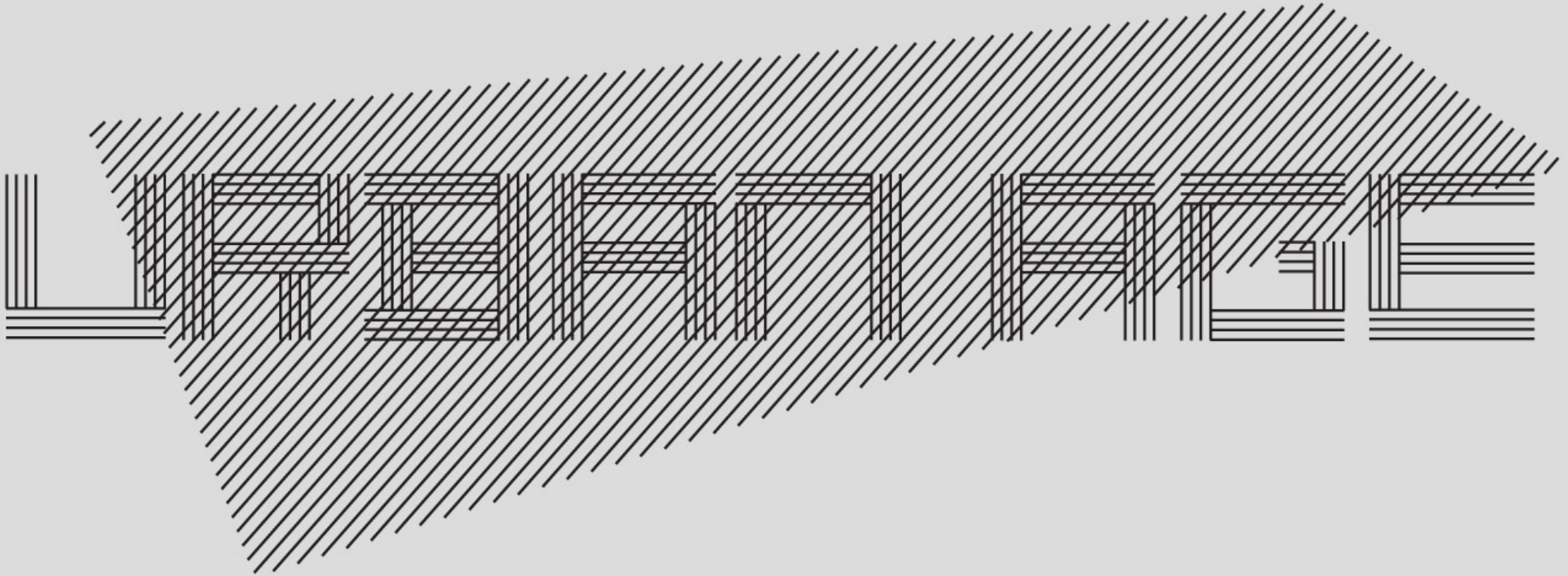
Landscape – Illustrative Axonometric

Columbia University in the City of New York

The Essential Roll of Urban Institutions in the Urban Age

Manhattanville, West Harlem Proposal





a worldwide series of conferences
on the future of cities

organised by the LSE Cities Programme and the
Alfred Herrhausen Society for International Dialogue