

URBAN AGE LONDON CONFERENCE

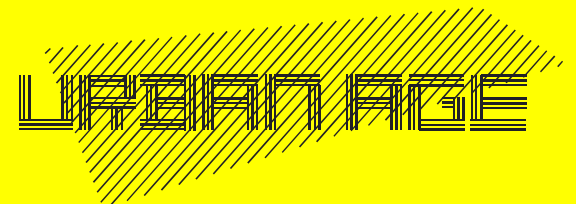
NOVEMBER 2005

Bridget Rosewell

Consultant Chief Economist to the Greater London Authority

Labour market demands

All rights are reserved by the presenter.
www.urban-age.net





Labour Market Demands

Bridget Rosewell
Consultant Chief Economist, GLA Economics
November 12th 2005

Context of London's labour market

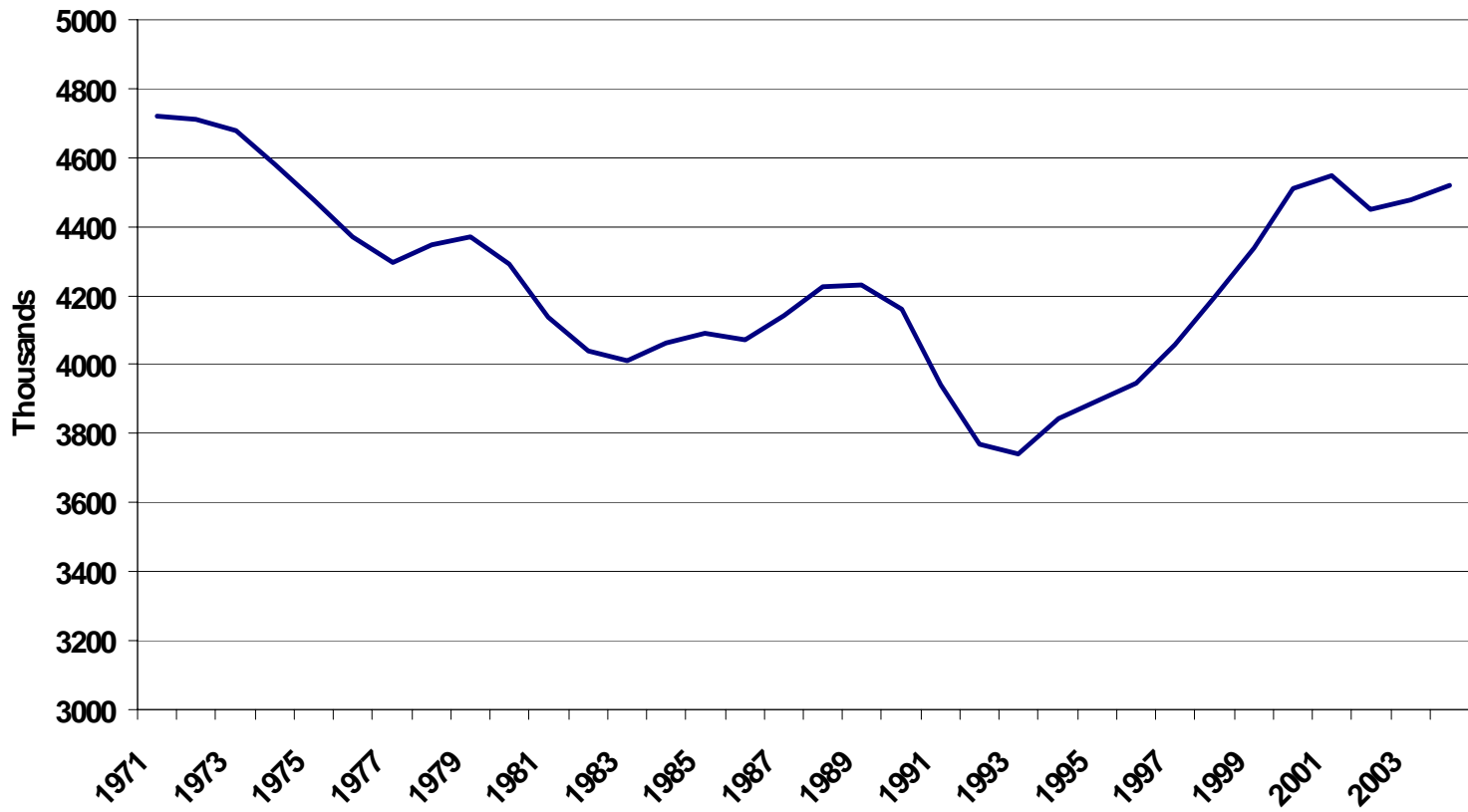
- Recovery in London's jobs
- London's changing structure
- Growth in jobs for women
- Where London's jobs are
- Commuting within London
- Lower employment rates in London



Recovery in London's jobs



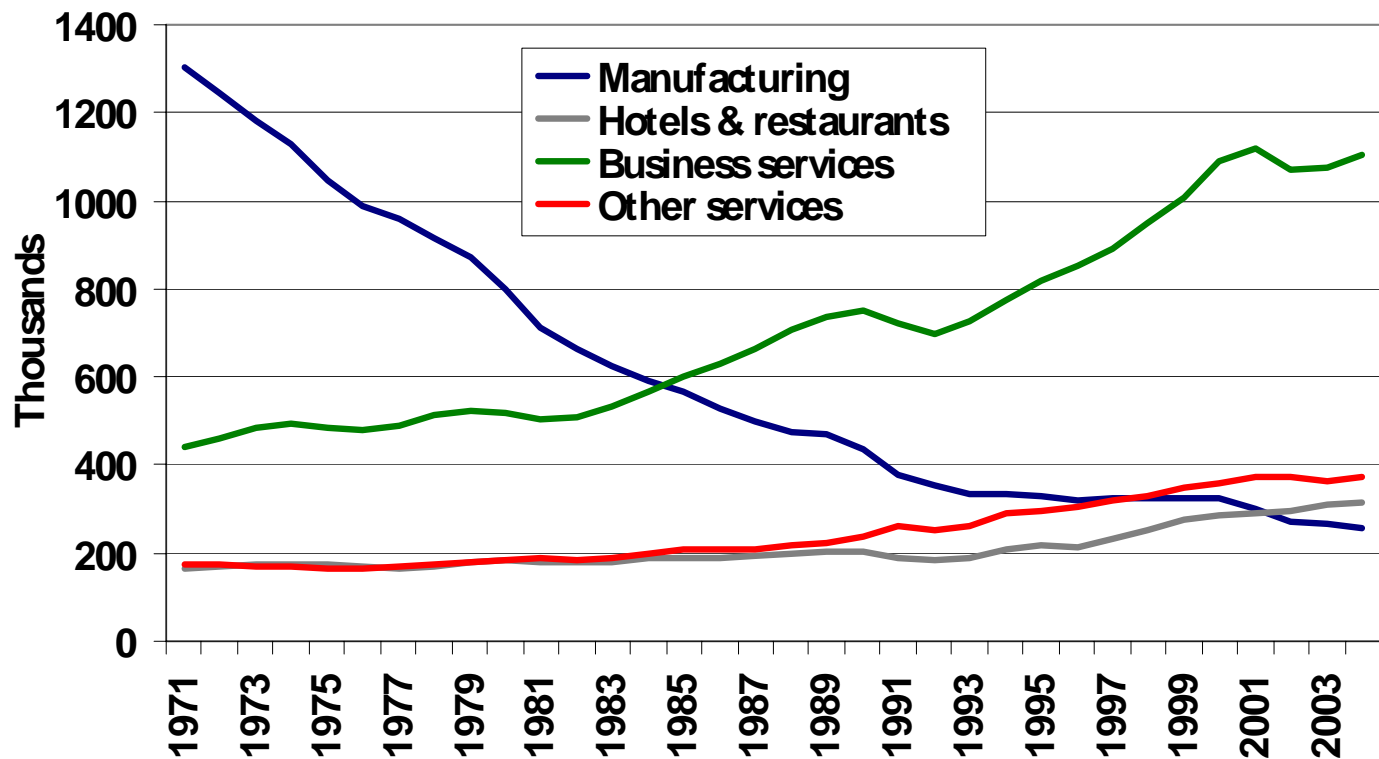
Employment in London 1971-2004



London's changing structure



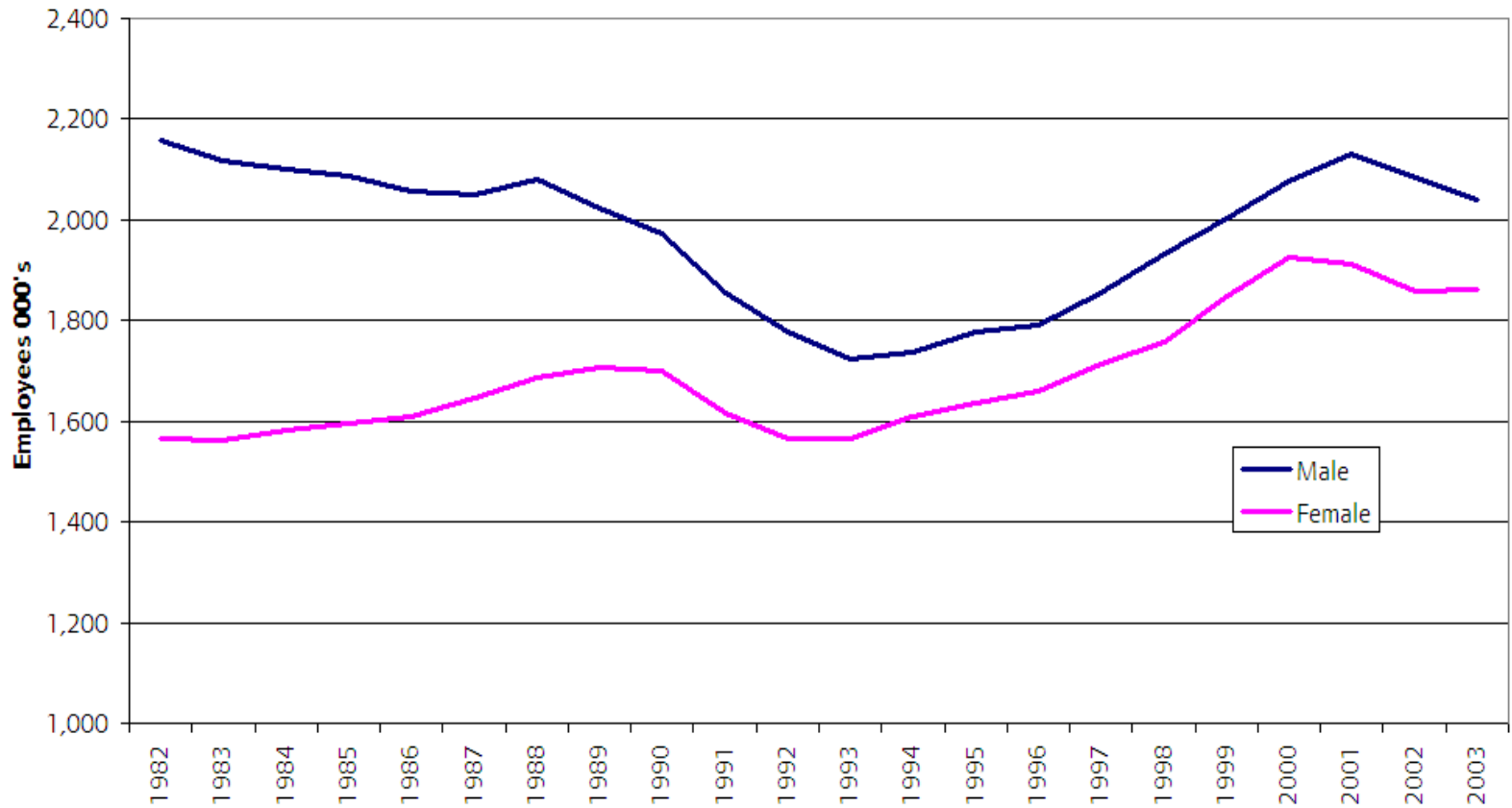
Employment in London: Selected Sectors
1971-2004



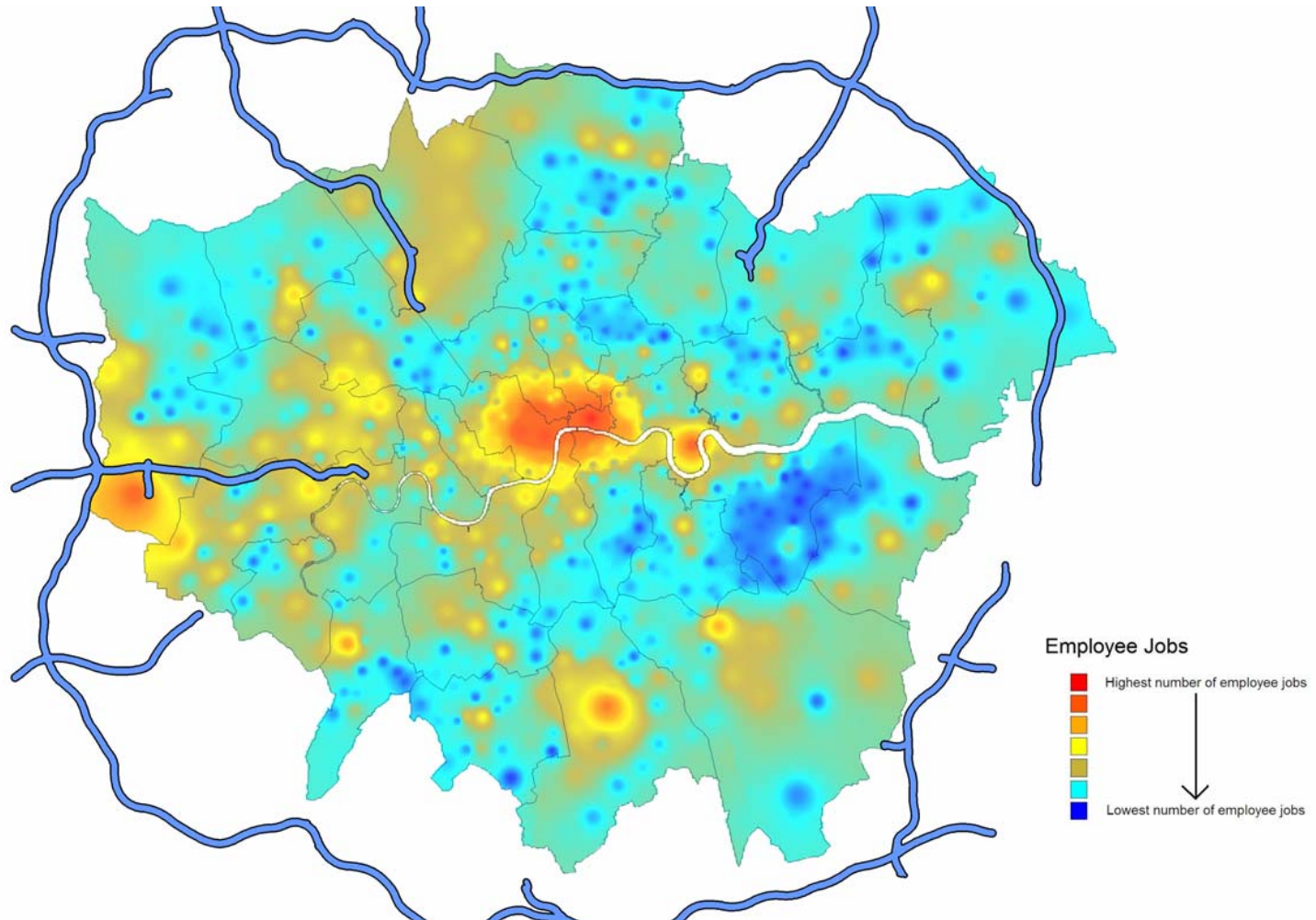
Growth in jobs for women



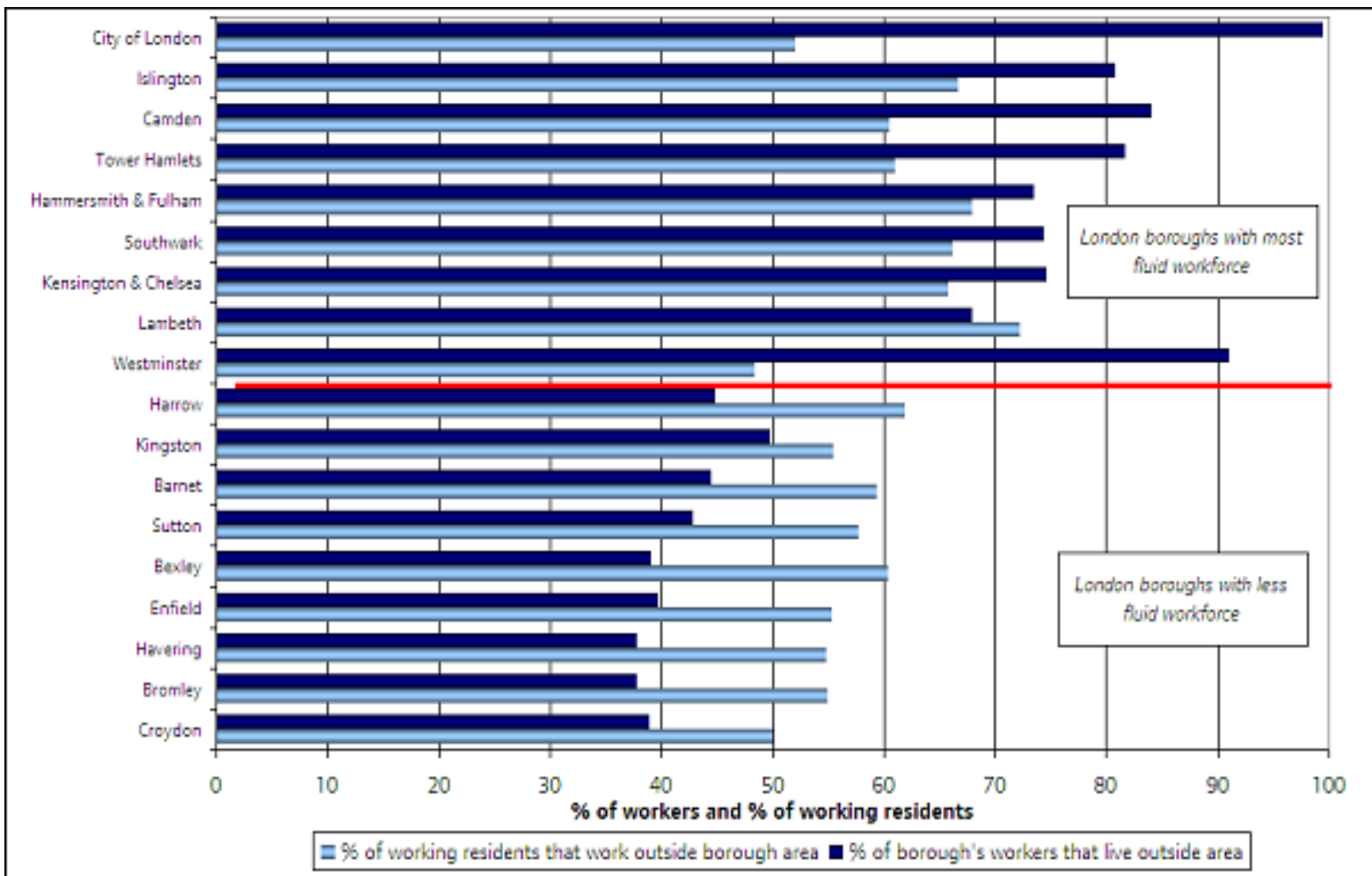
Employees in London by gender 1982 - 2003



Where London's jobs are



Commuting within London



Lower employment rates in London

